

TALL



OR



SHORT ?



EXAMPLE

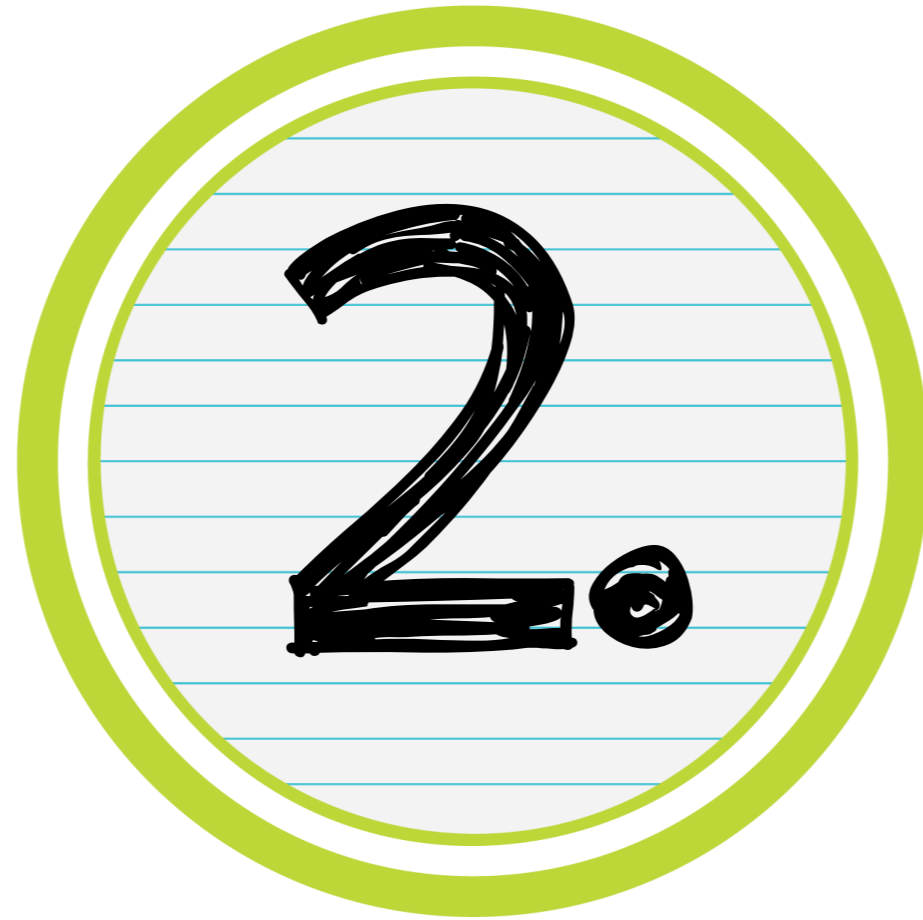


A. Is Bob tall or short?

B. He's tall.



EXAMPLE



A. Is Bill tall or short?

B. He's short.



A. Is Kate young or old?

B. She's young.



1

A. Is Peggy young or old?

B. She's old.



2

A. Is Howard heavy or thin?

B. He's heavy.



3.

A. Is Mike fat or thin?

B. He's thin.



4

A. Is Howard's car new or old?

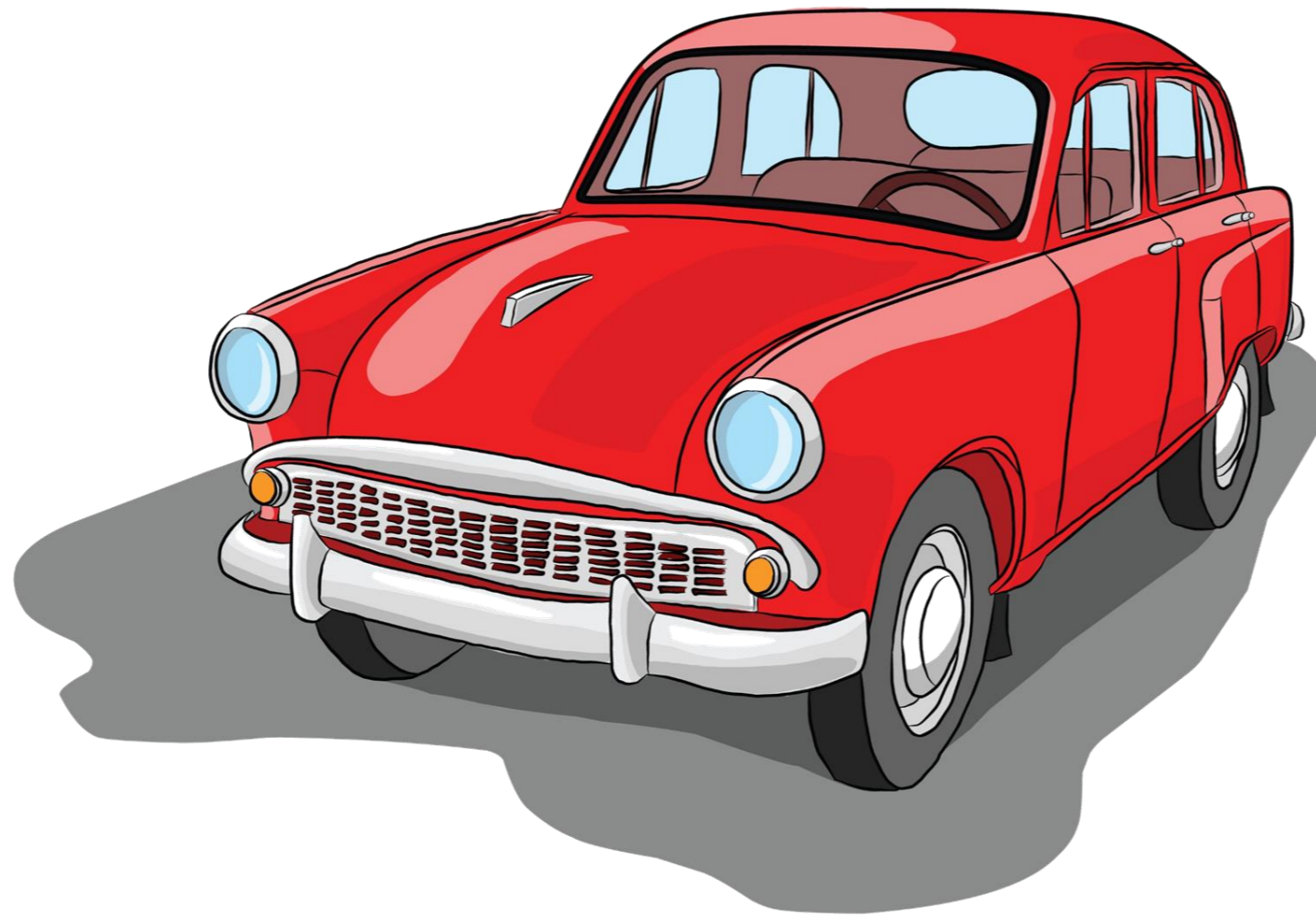
B. It's new.



5

A. Is Mike's car new or old?

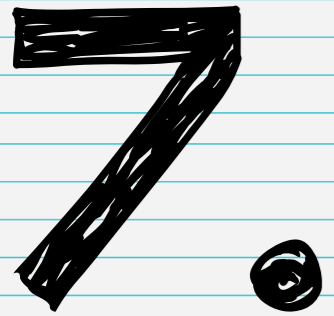
B. It's old.



6.

A. Is Gloria married or single?

B. She's married.



- A. Is the food at Burger Town expensive or cheap?**
- B. It's cheap.**



8



A. Is Larry rich or poor?

B. He's rich.



9

- A. Is Mr. Crook handsome
or ugly?**
- B. He's ugly.**



10.

- A. Is Vanessa beautiful or ugly?**
B. She's beautiful.



11

- A. Are the questions in chapter 17 easy or difficult?**
- B. They're difficult.**



12

- A. Are the **questions** in chapter 17 easy or difficult?
- B. **THEY'RE** difficult.



12

- A. Is Robert's house large or small?**
- B. It's large.**



13.

- A. Is George's apartment big or little?**
- B. It's little.**



14

apartment



14

**George's
apartment is little.**



14

- A. Are Kate's neighbors quiet or noisy?**
B. They're noisy.



15.

