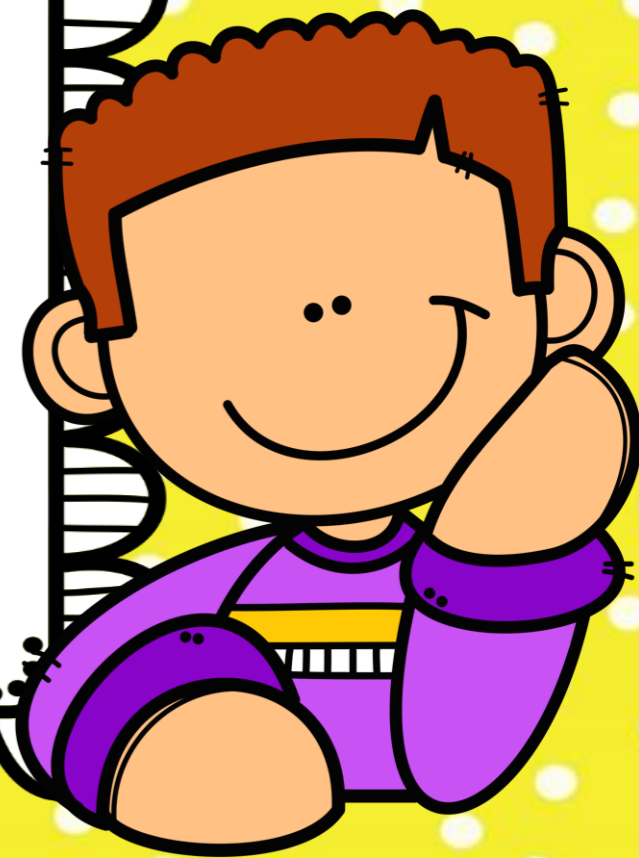


YOU'RE

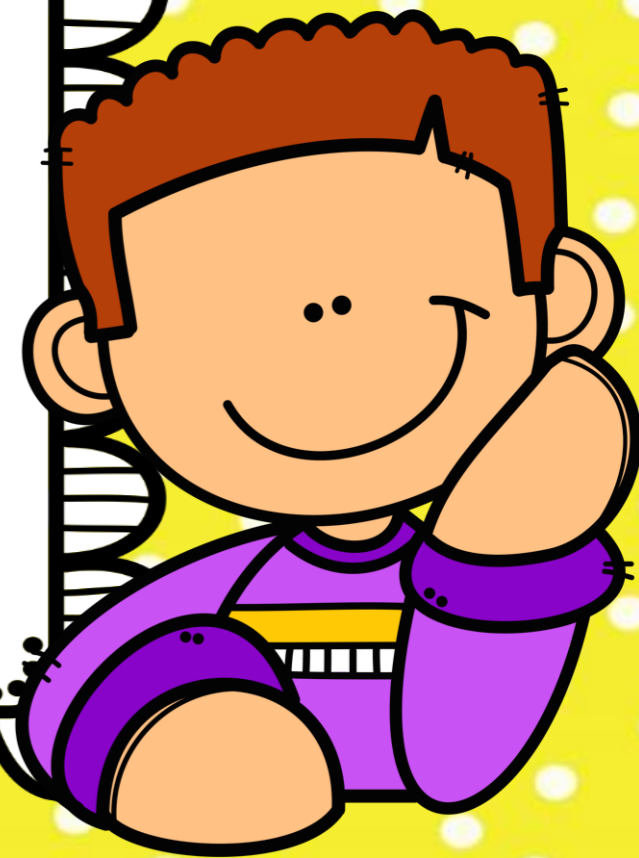
OR

YOUR?

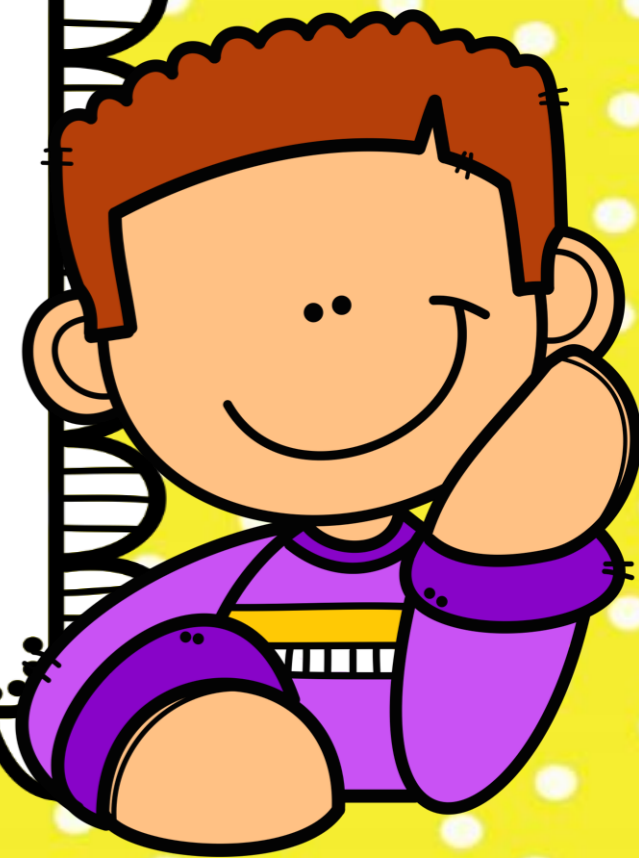


YOU'RE

CONTRAdiction



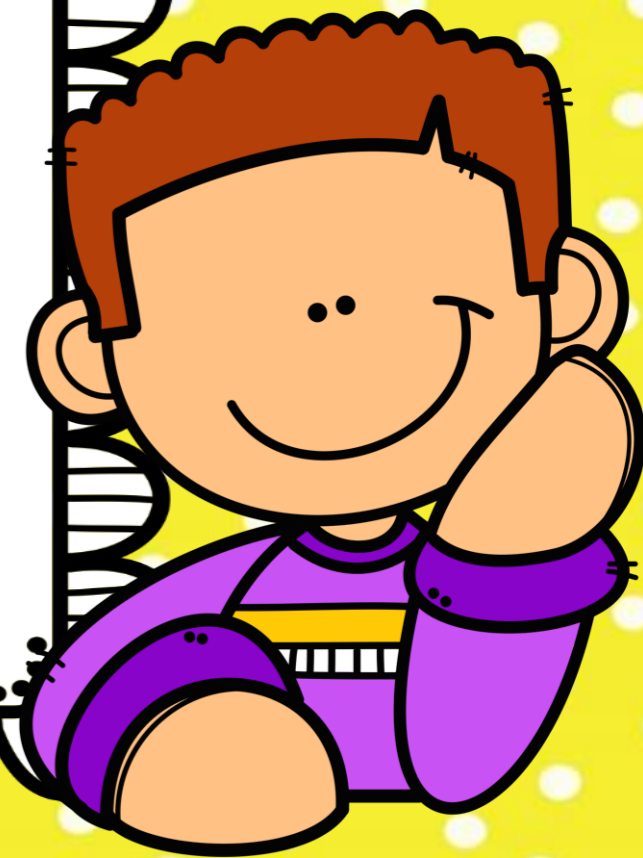
EXAMPLES



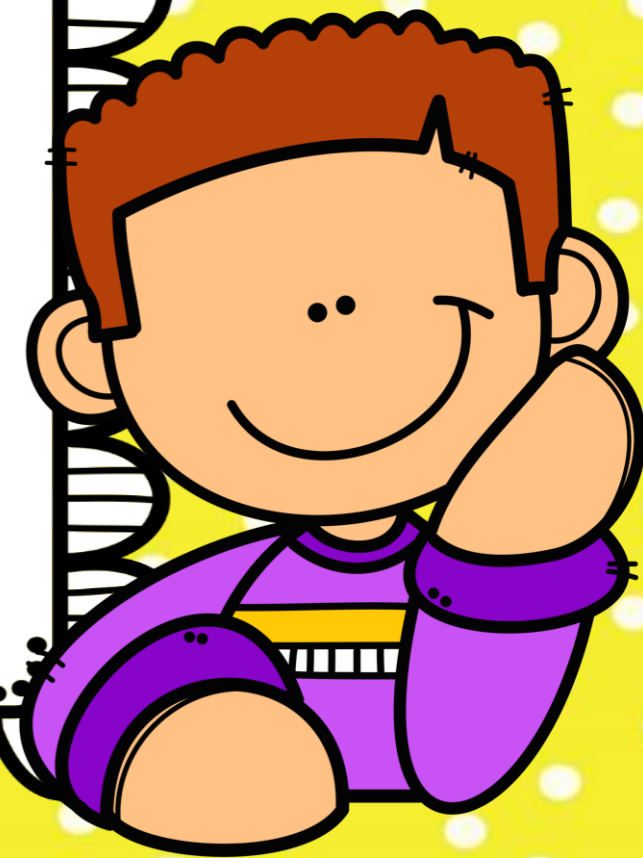
You're
a secretary.



You're
in the garden.



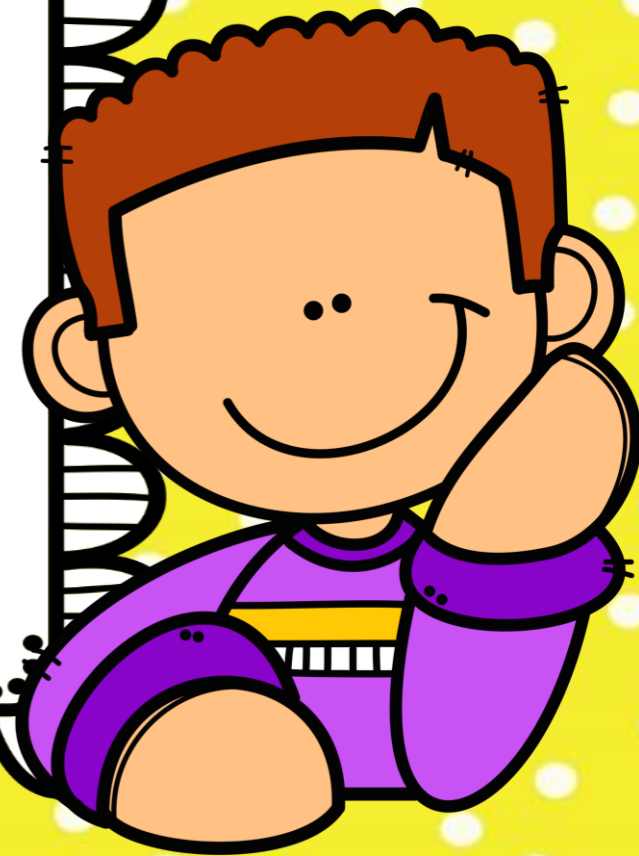
You're tall.



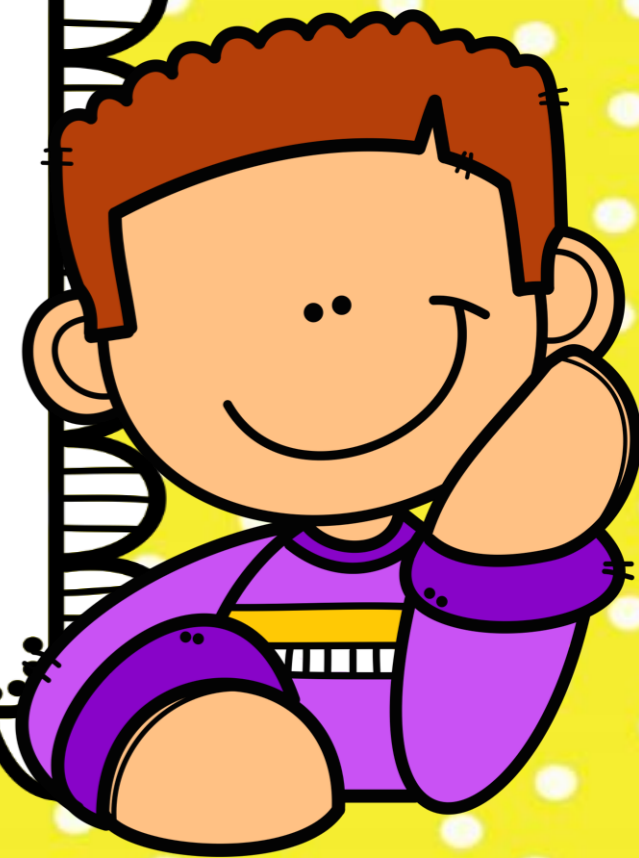
YOUR

POSSESSIVE

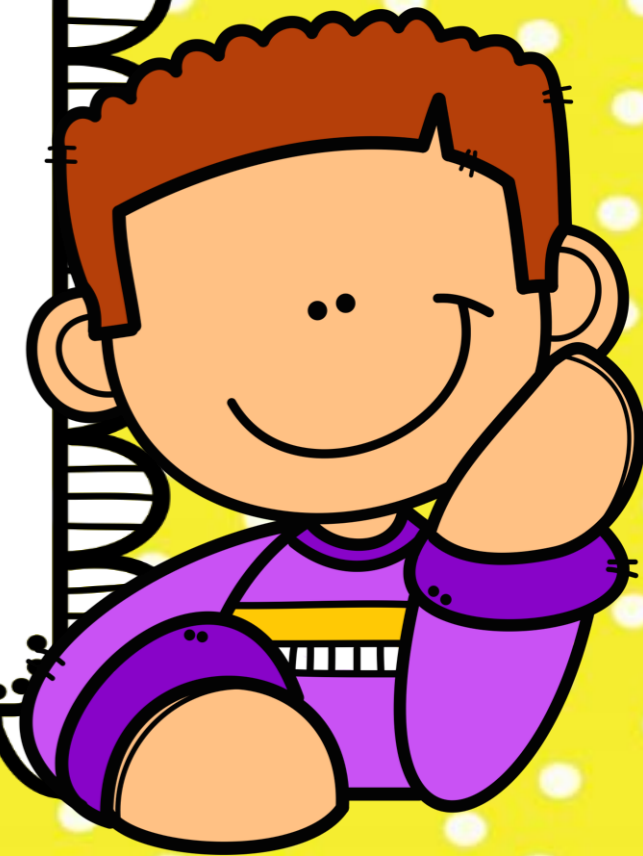
ADJECTIVE



EXAMPLES



The secretary is in
your office.



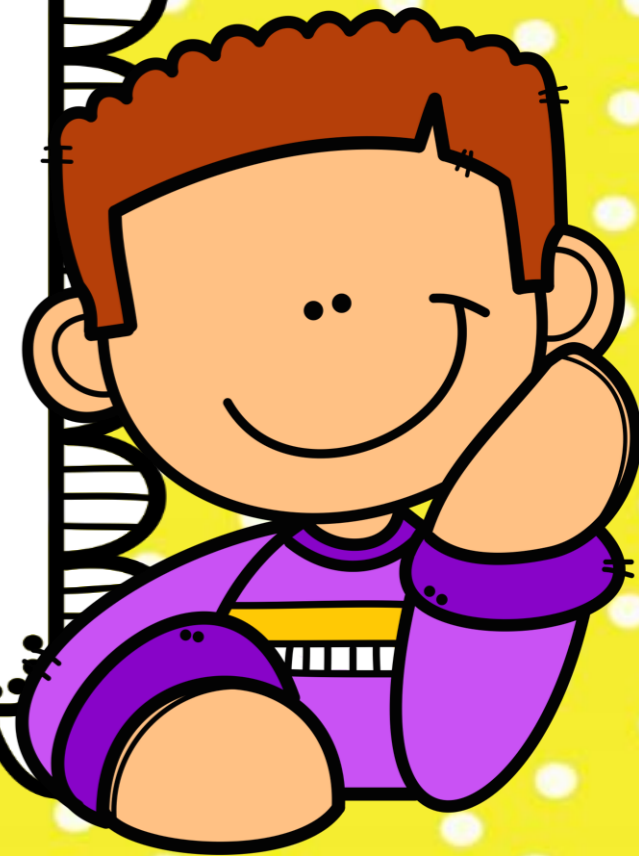
Your garden is
beautiful.



Your brother is tall.



PRACTICE



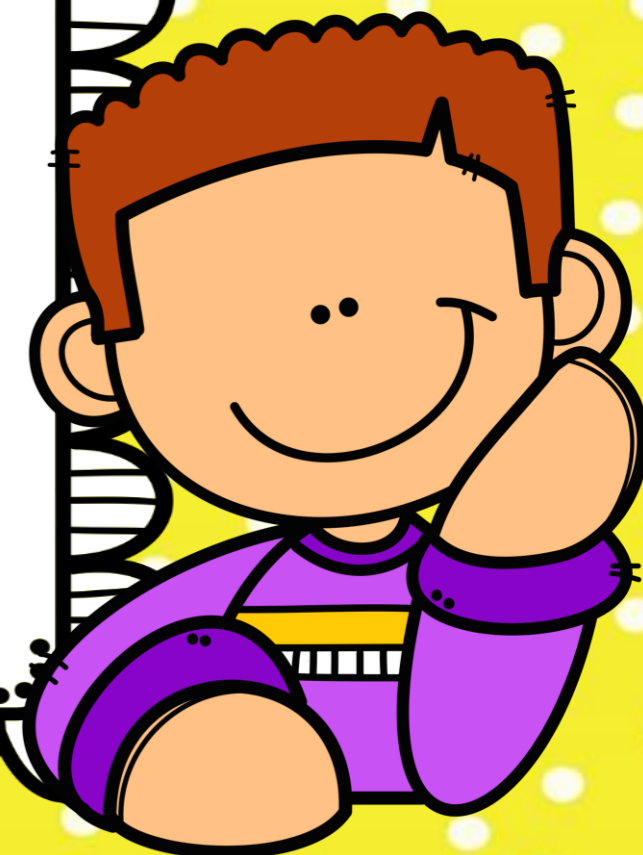
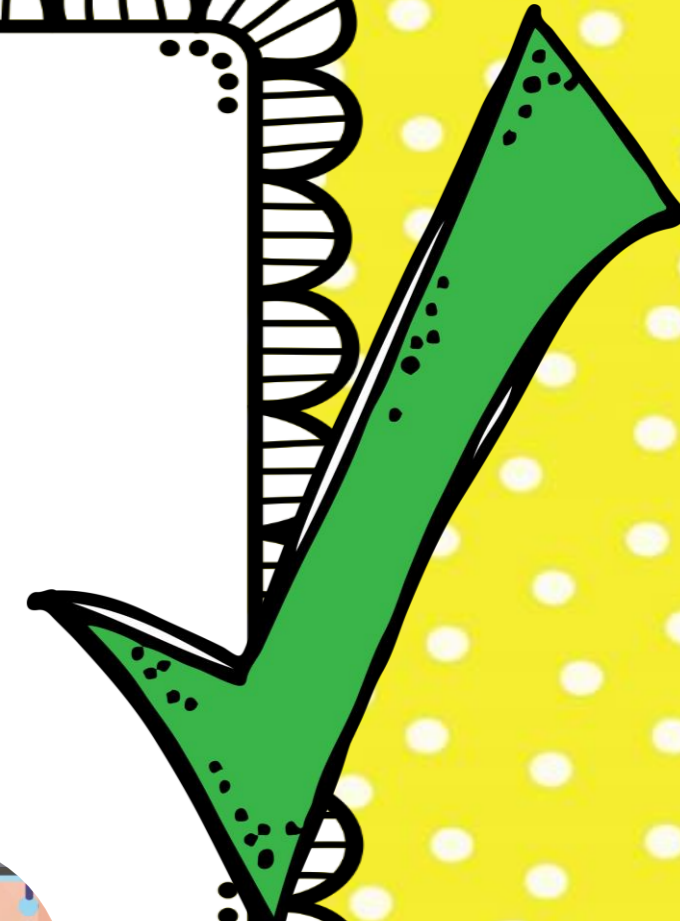
— sister is in
the bedroom.

YOU'RE
OR
YOUR?



YOUR sister is in
the bedroom.

YOU'RE
OR
YOUR?



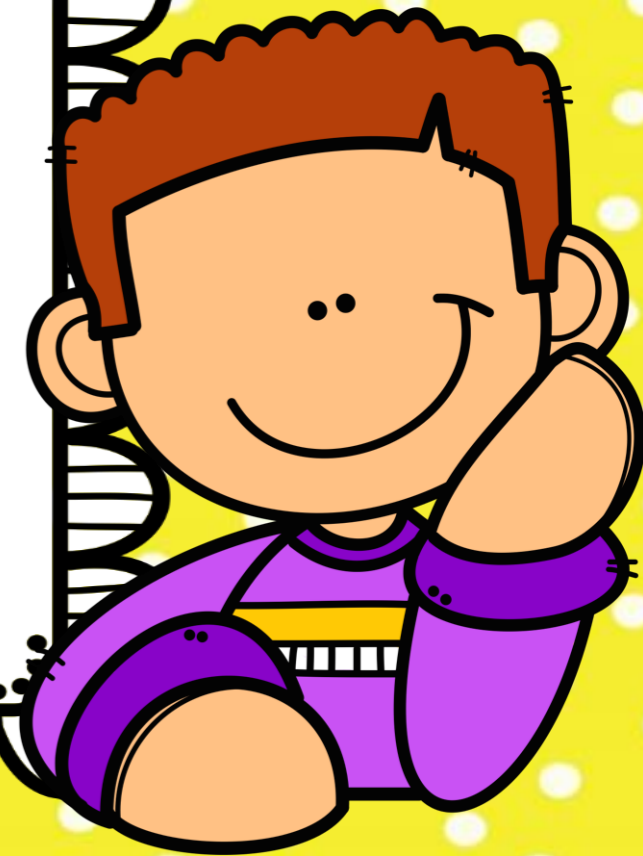
_____ in the office
with the secretary.

YOU'RE
OR
YOUR?



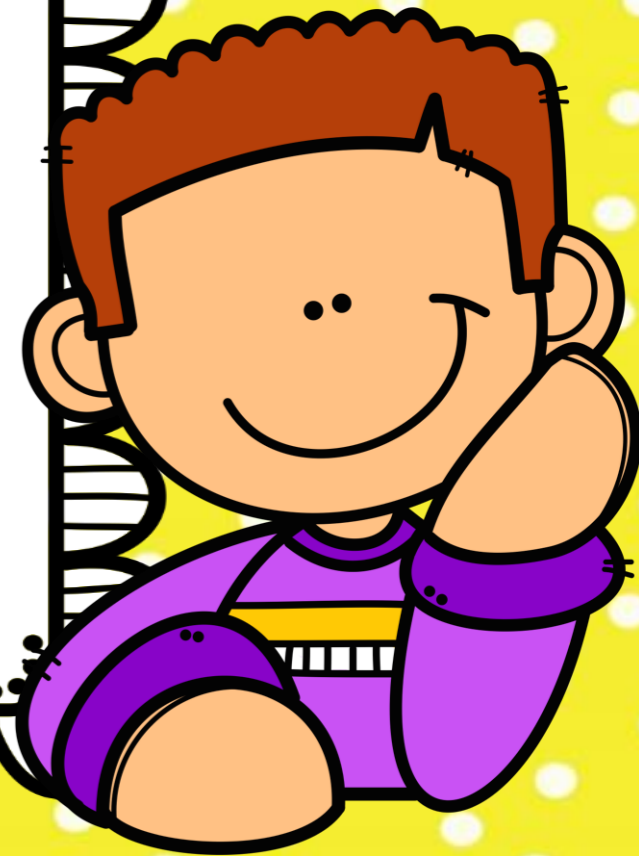
YOU'RE in the office
with the secretary.

YOU'RE
OR
YOUR?



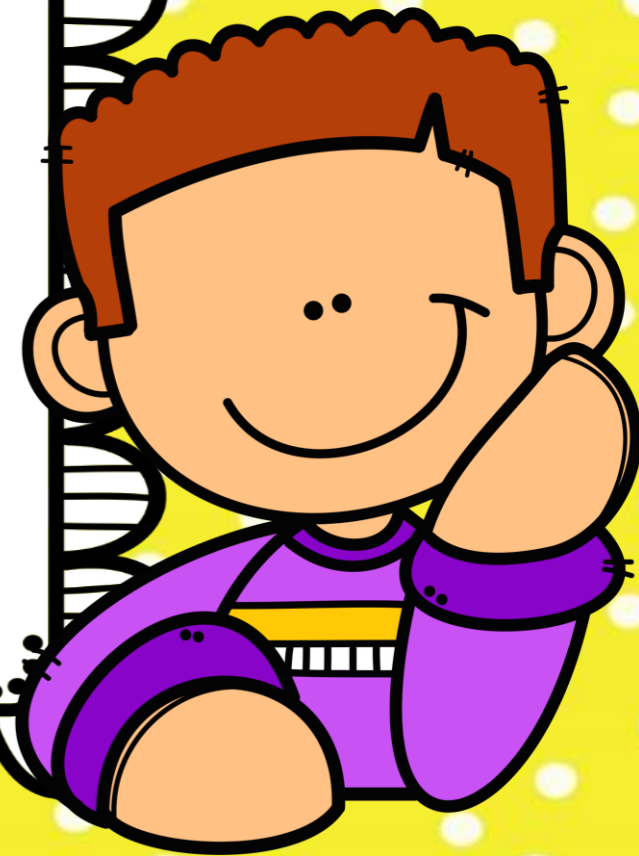
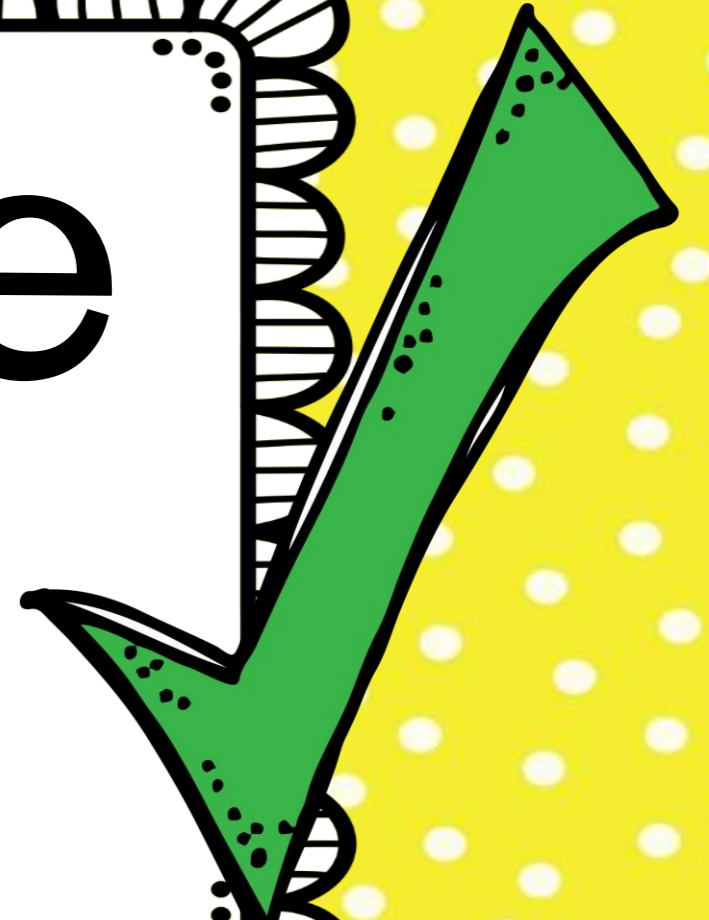
— children are
very smart.

YOU'RE
OR
YOUR?



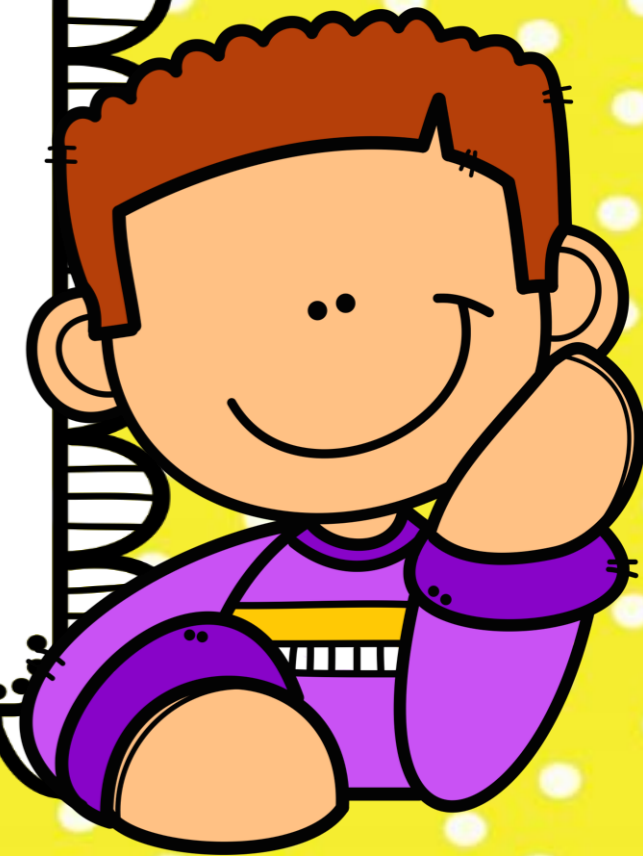
YOUR children are
very smart.

YOU'RE
OR
YOUR?



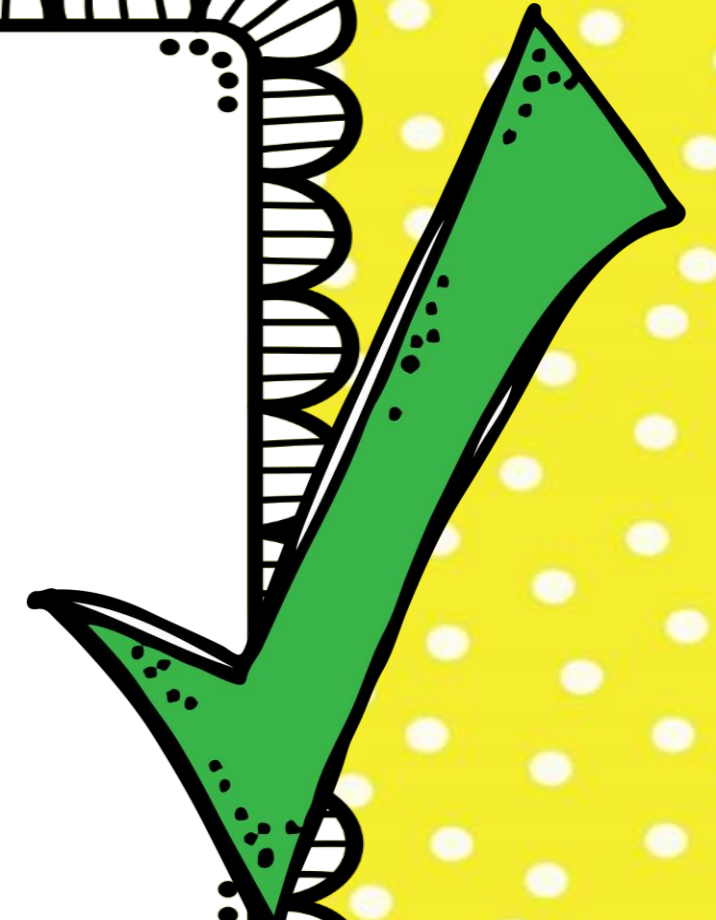
_____ in the
garden.

YOU'RE
OR
YOUR?



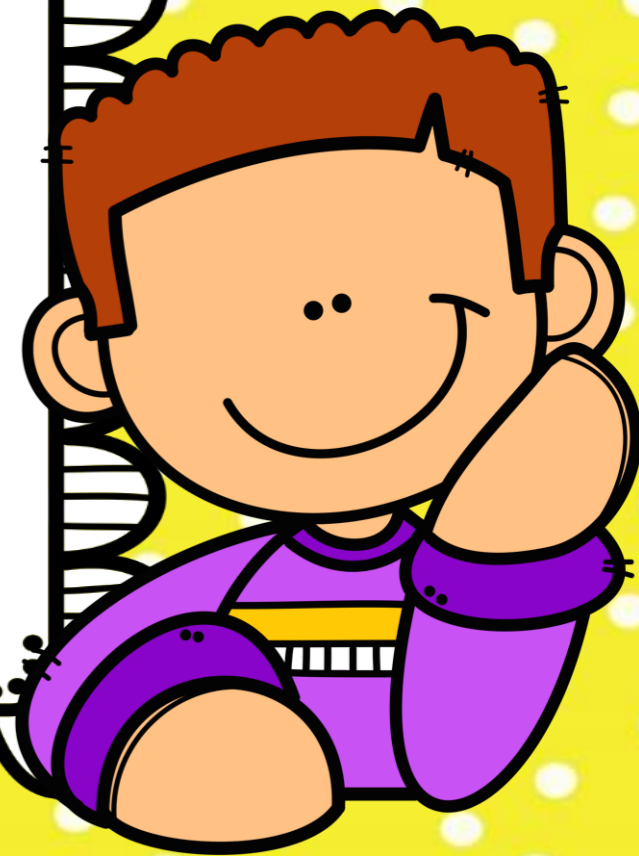
YOU'RE in the
garden.

YOU'RE
OR
YOUR?



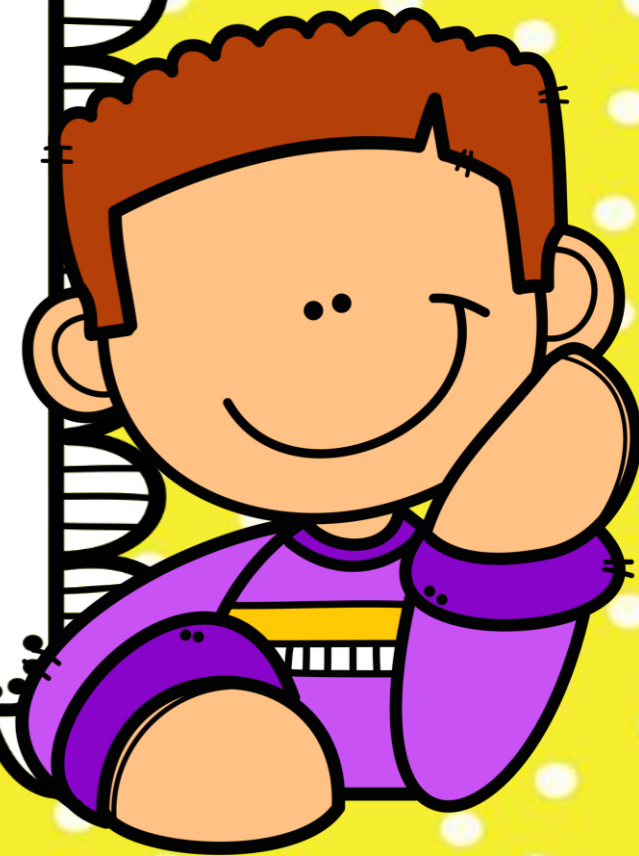
— in the yard
with — dog.

YOU'RE
OR
YOUR?



YOU'RE in the yard
with **YOUR** dog.

YOU'RE
OR
YOUR?



— — — boss is in
— — — office.

YOU'RE
OR
YOUR?



YOUR boss is in
YOUR office.

YOU'RE
OR
YOUR?





Cursos de Inglés ATS



cursosats

www.cursosats.com

