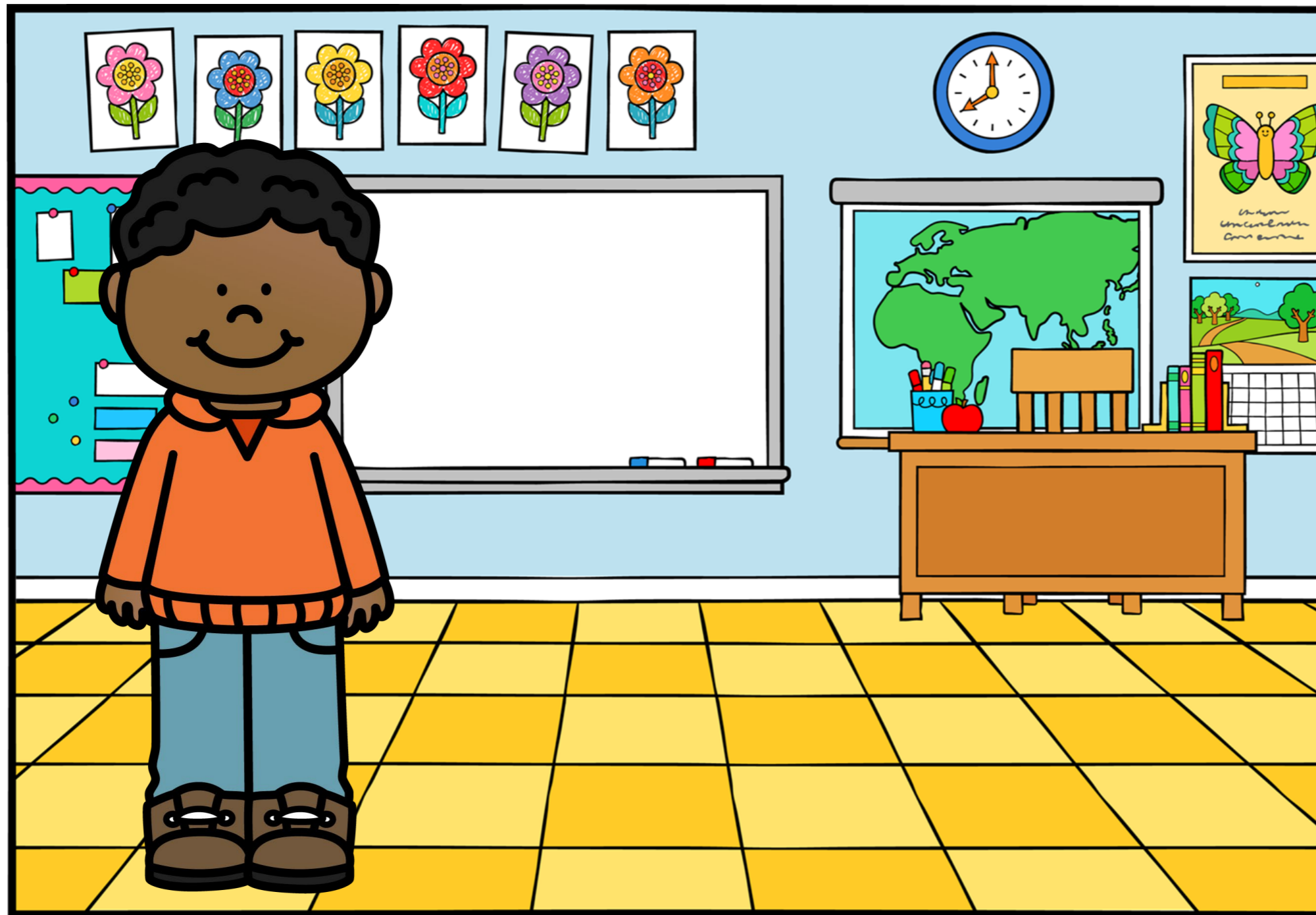
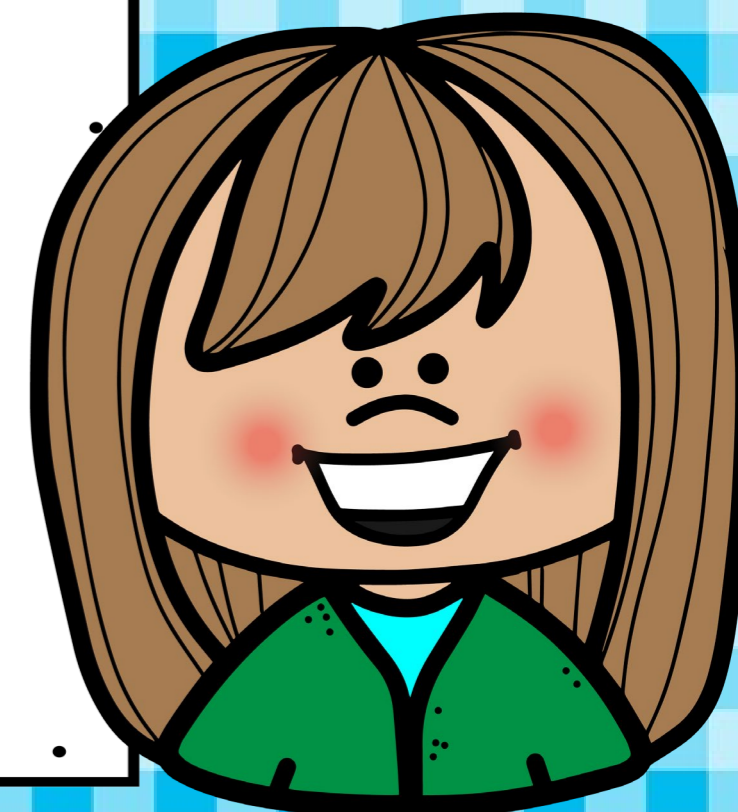


# AM, IS, OR ARE?

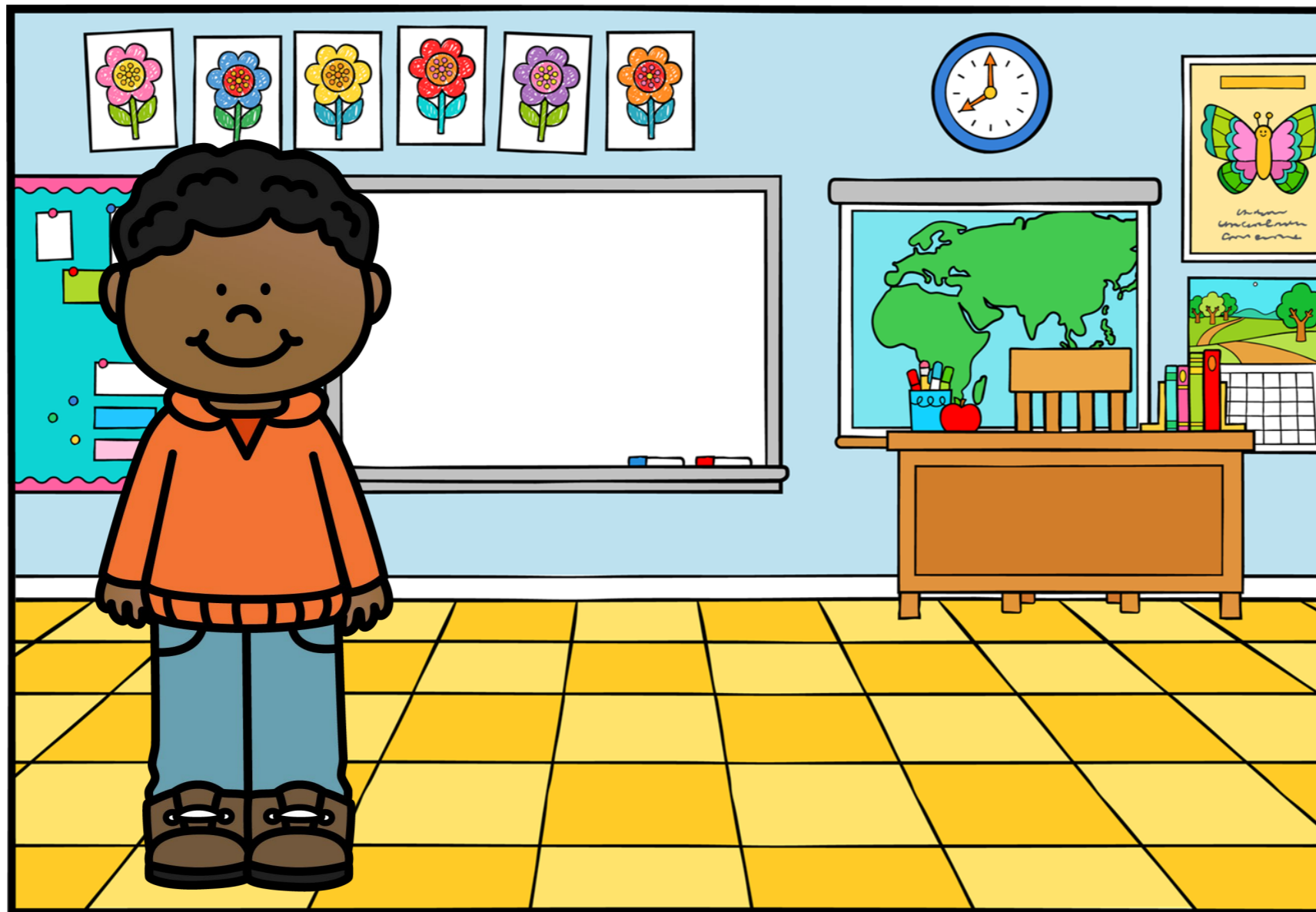


AM  
IS  
ARE



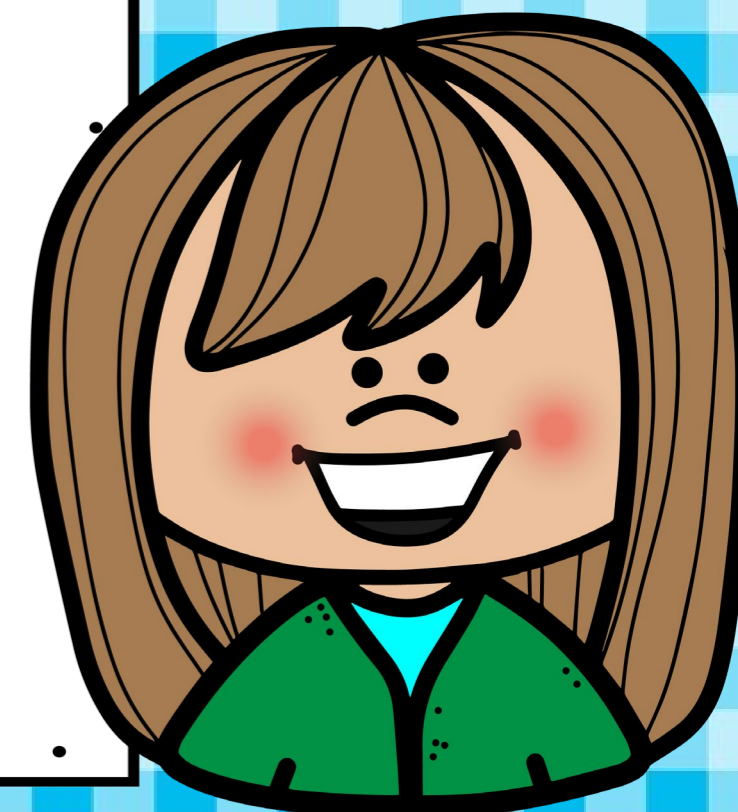


1



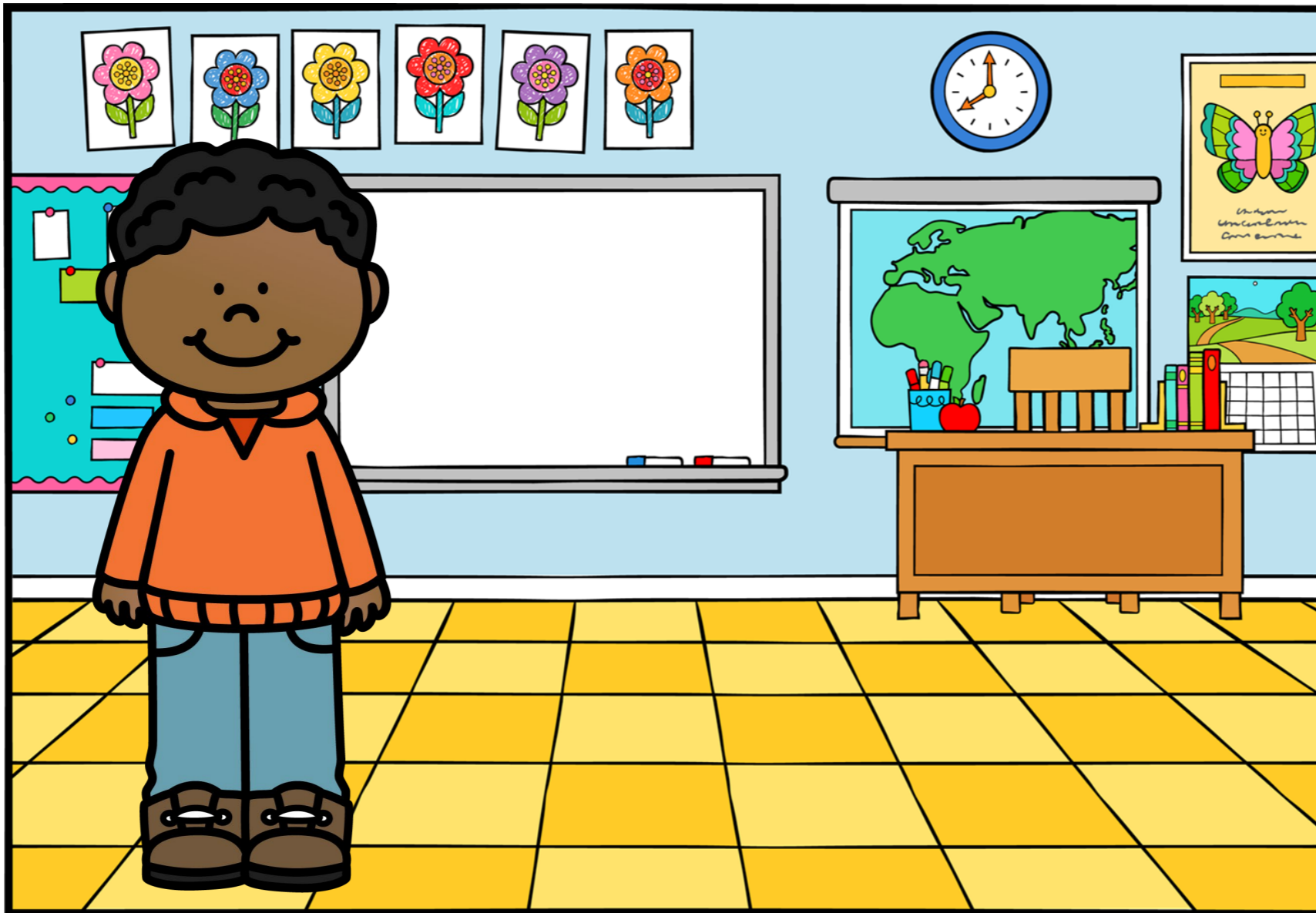
AM  
IS  
ARE

WHERE ( AM / IS / ARE ) HE?

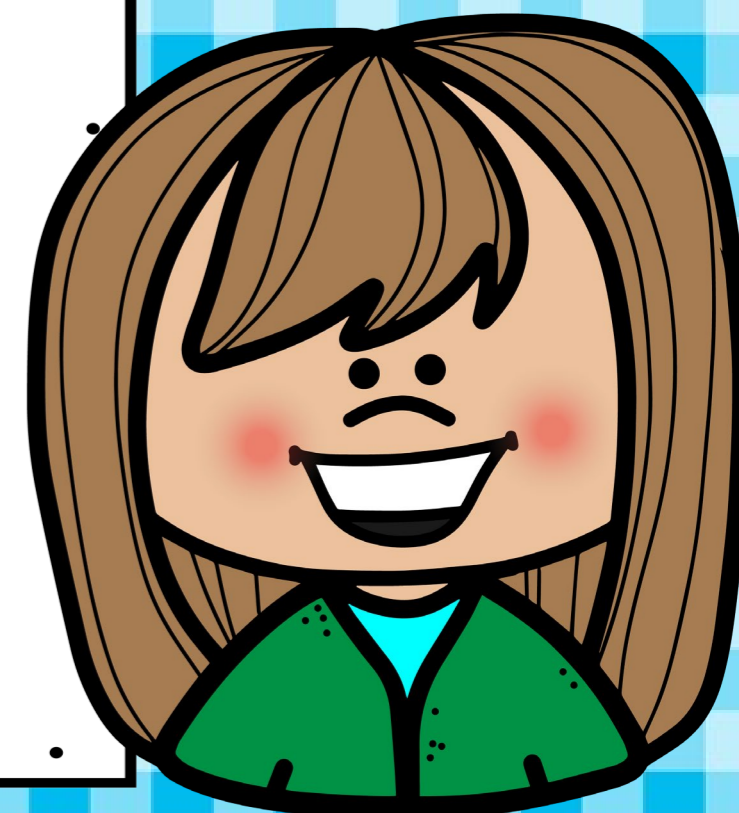




1

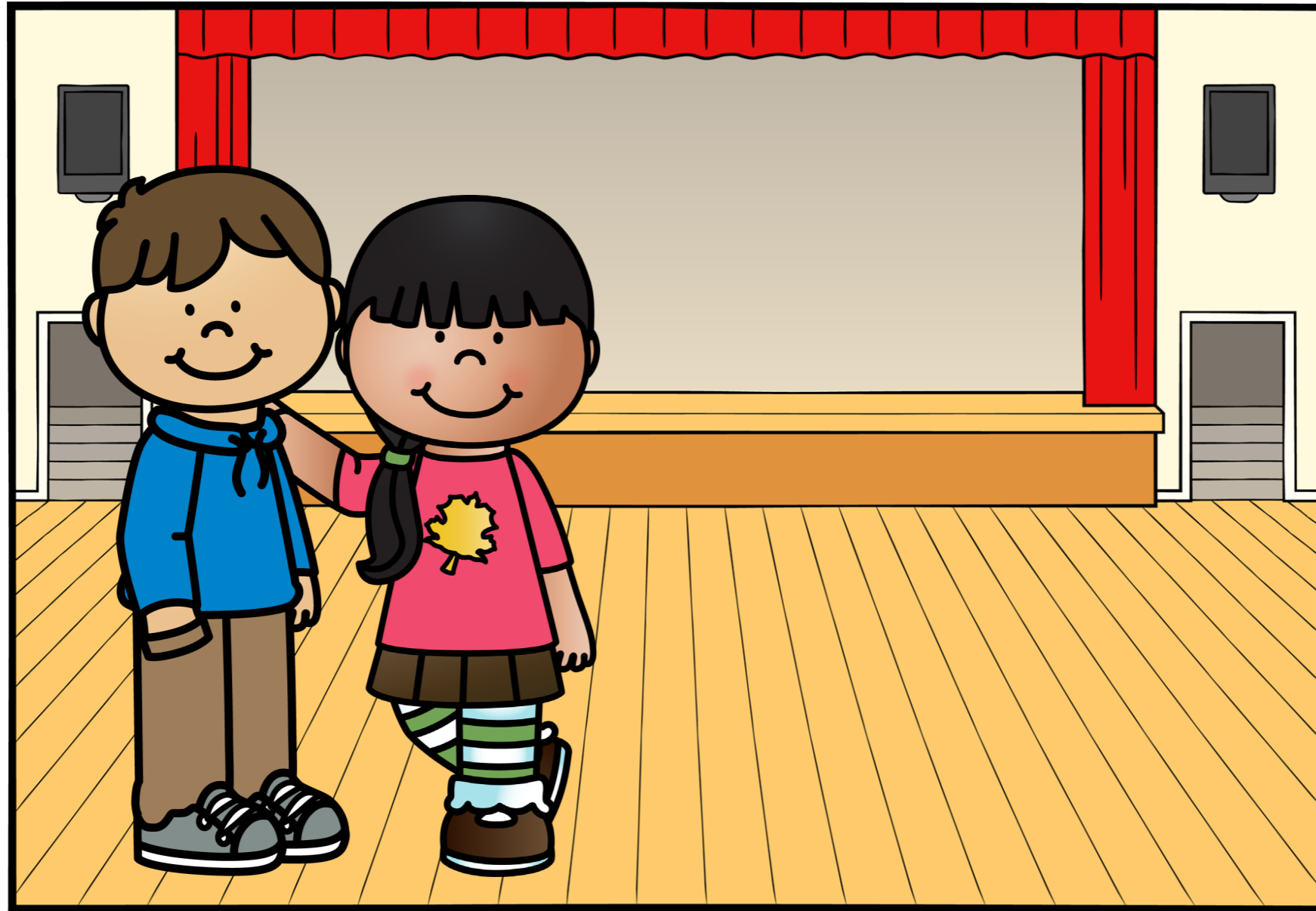


AM  
IS  
ARE



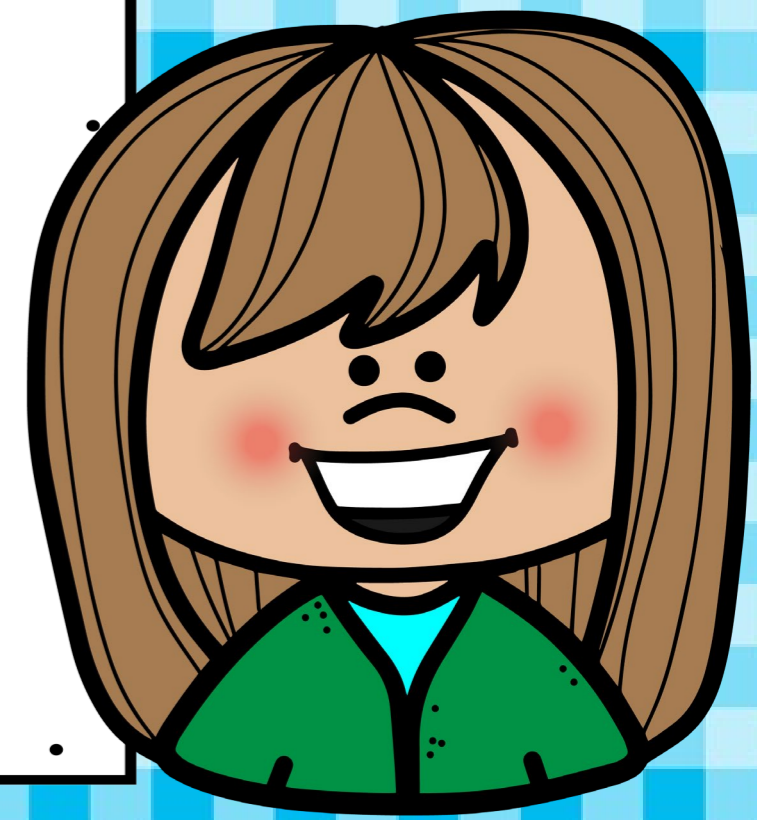
WHERE IS HE?

2

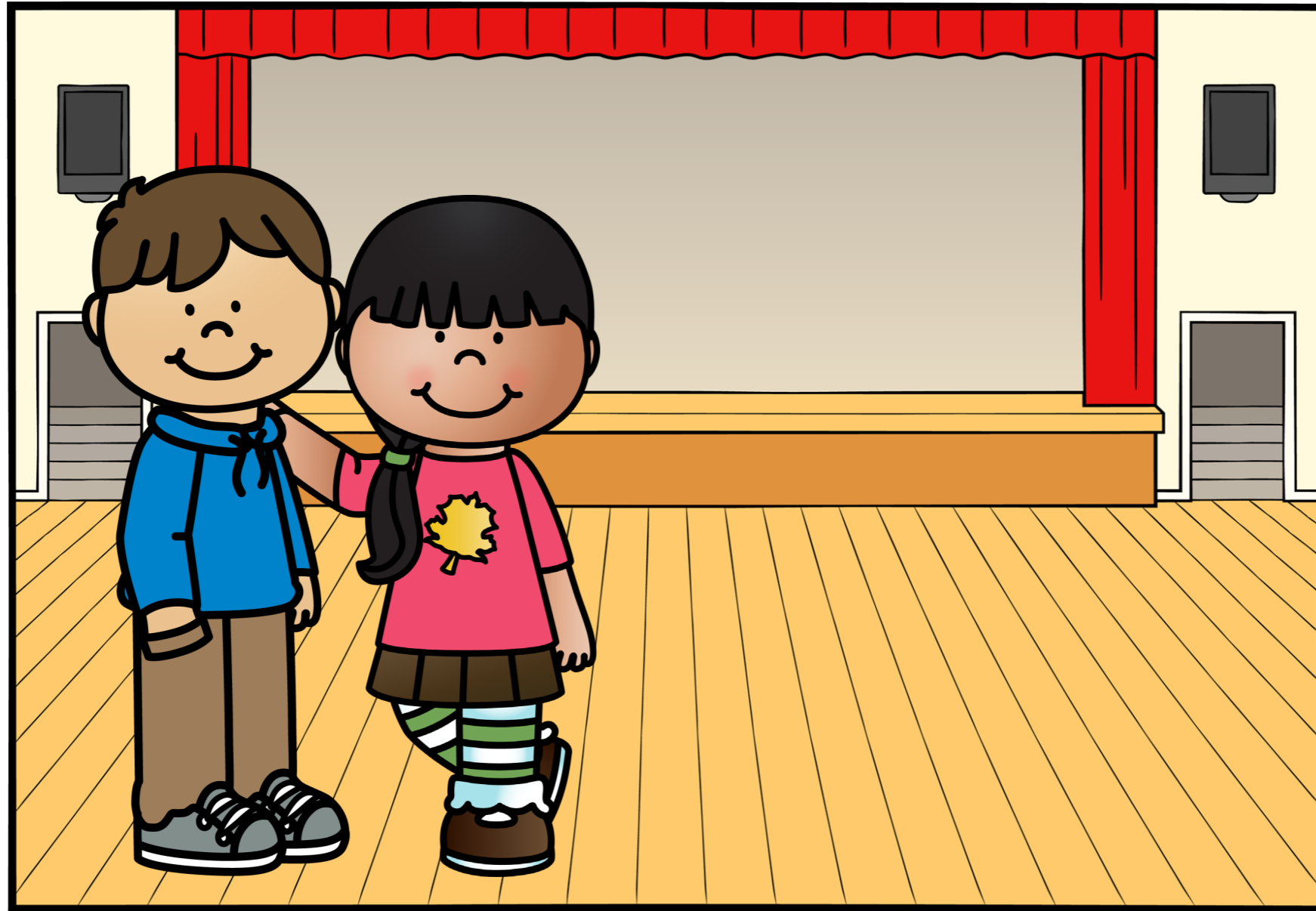


AM  
IS  
ARE

**BOB AND I ( AM / IS / ARE )  
IN THE AUDITORIUM.**



2



AM  
IS  
ARE



**BOB AND I ARE  
IN THE AUDITORIUM.**

3



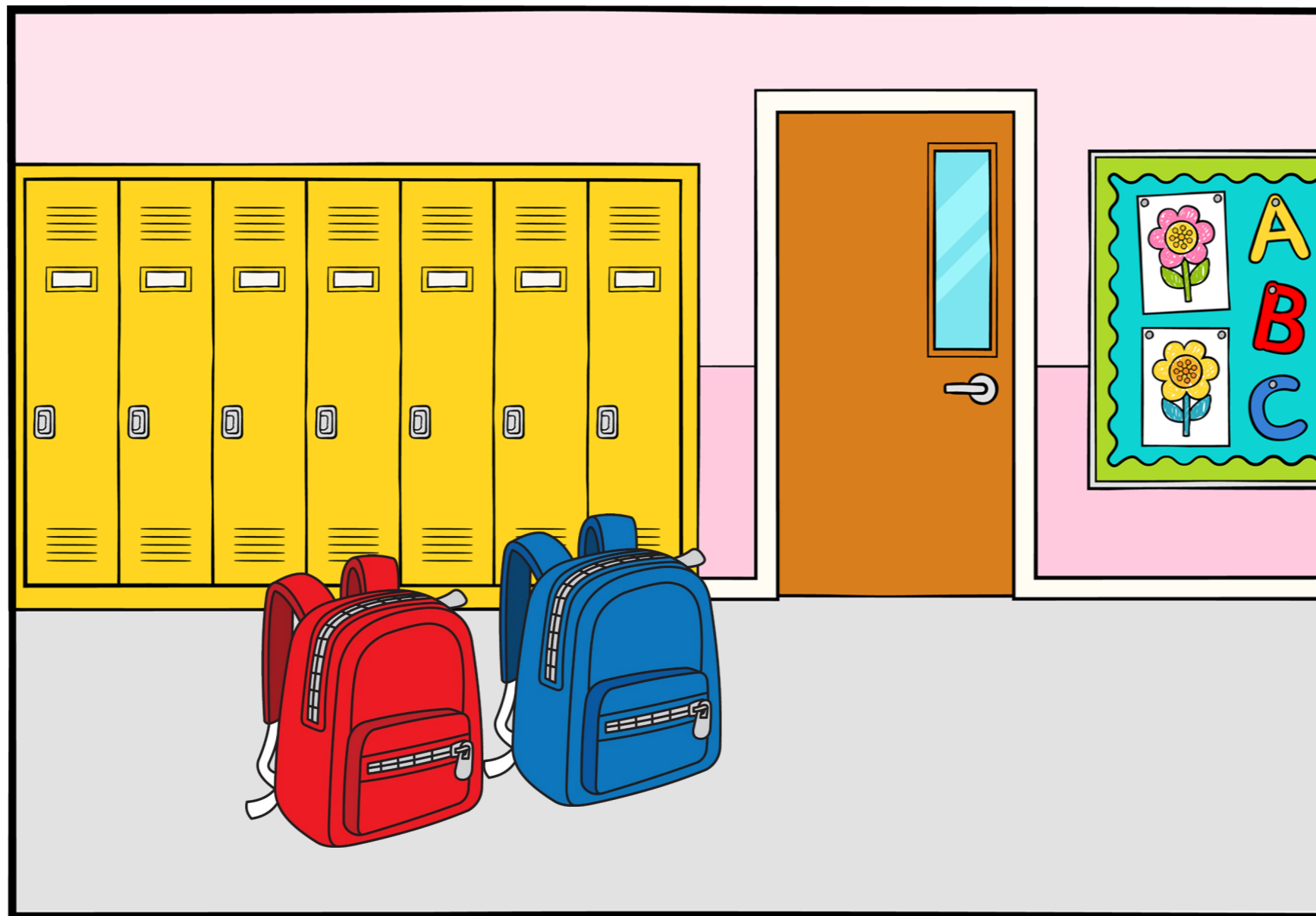
AM  
IS  
ARE



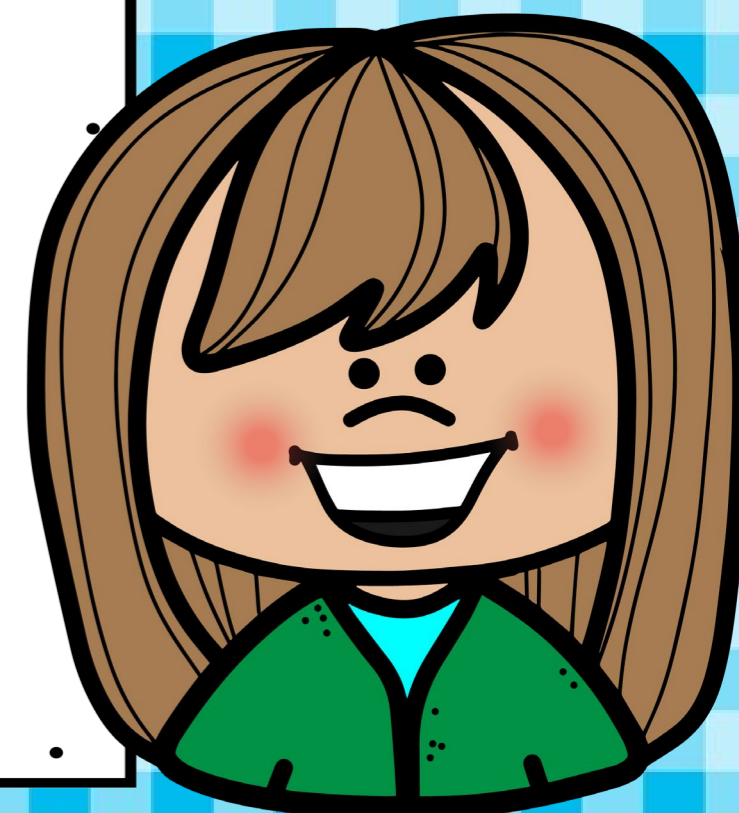
**( AM / IS / ARE ) THE  
BACKPACKS IN THE HALLWAY?**



3



AM  
IS  
ARE



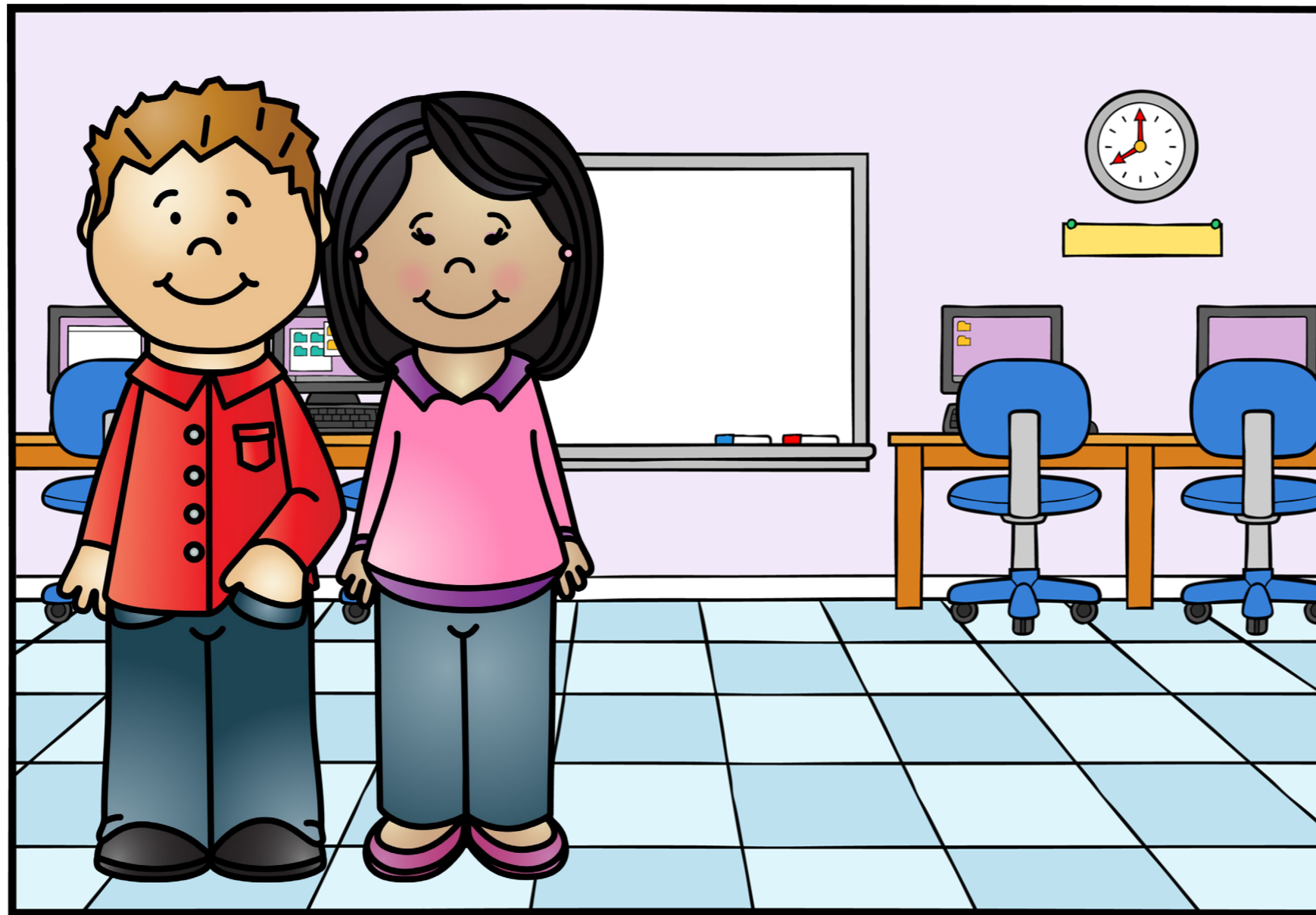
**ARE THE BACKPACKS IN  
THE HALLWAY?**

4



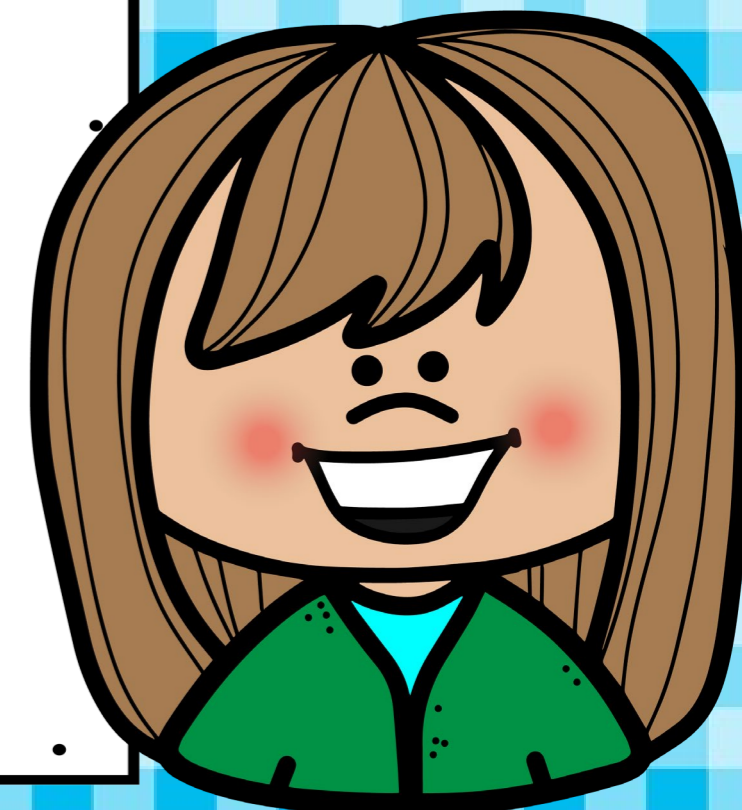
Inglés Paso a Paso con Lucie

LESSON  
34



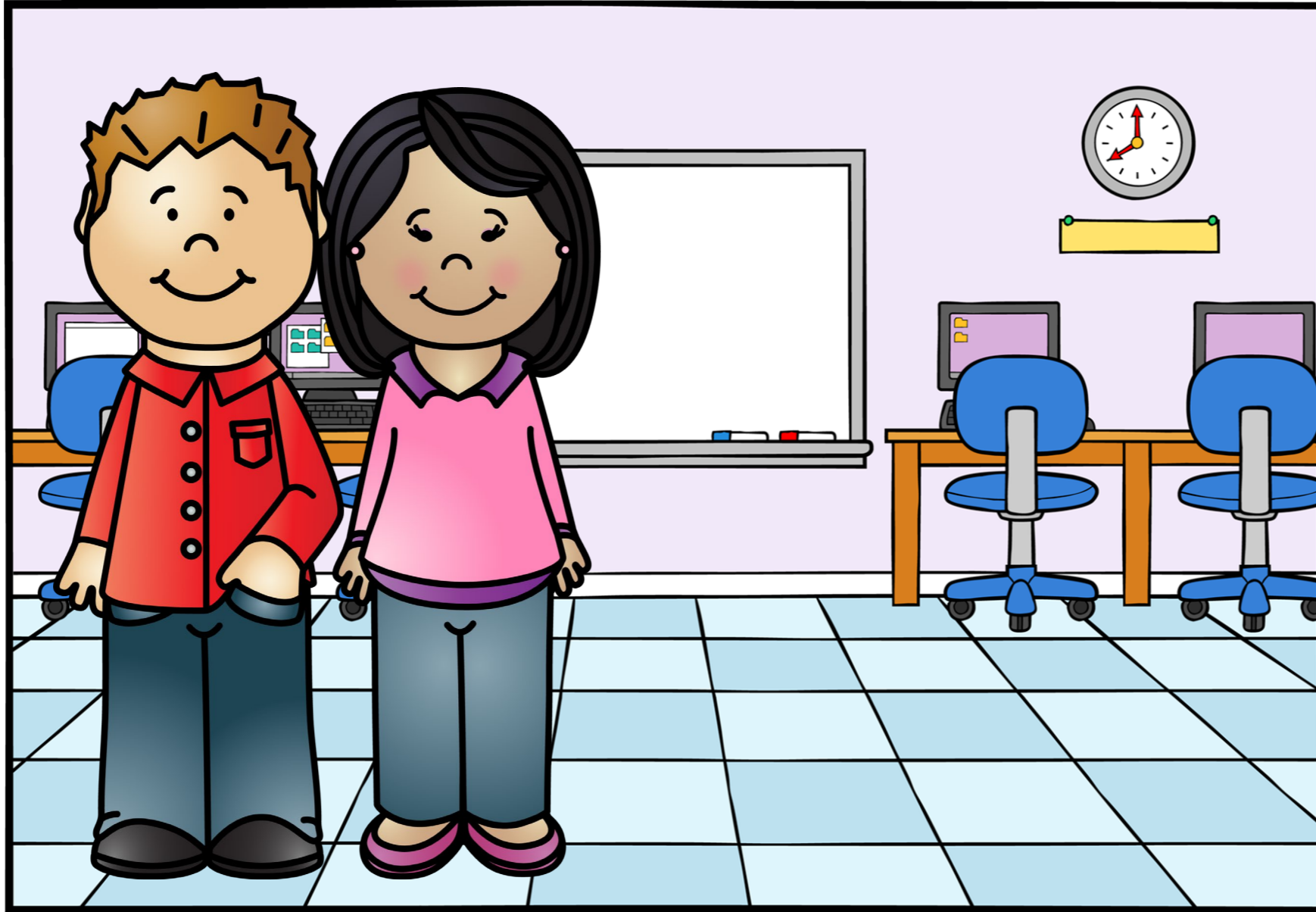
AM  
IS  
ARE

**WHERE ( AM / IS / ARE )  
MR. AND MRS. PARKER?**





4

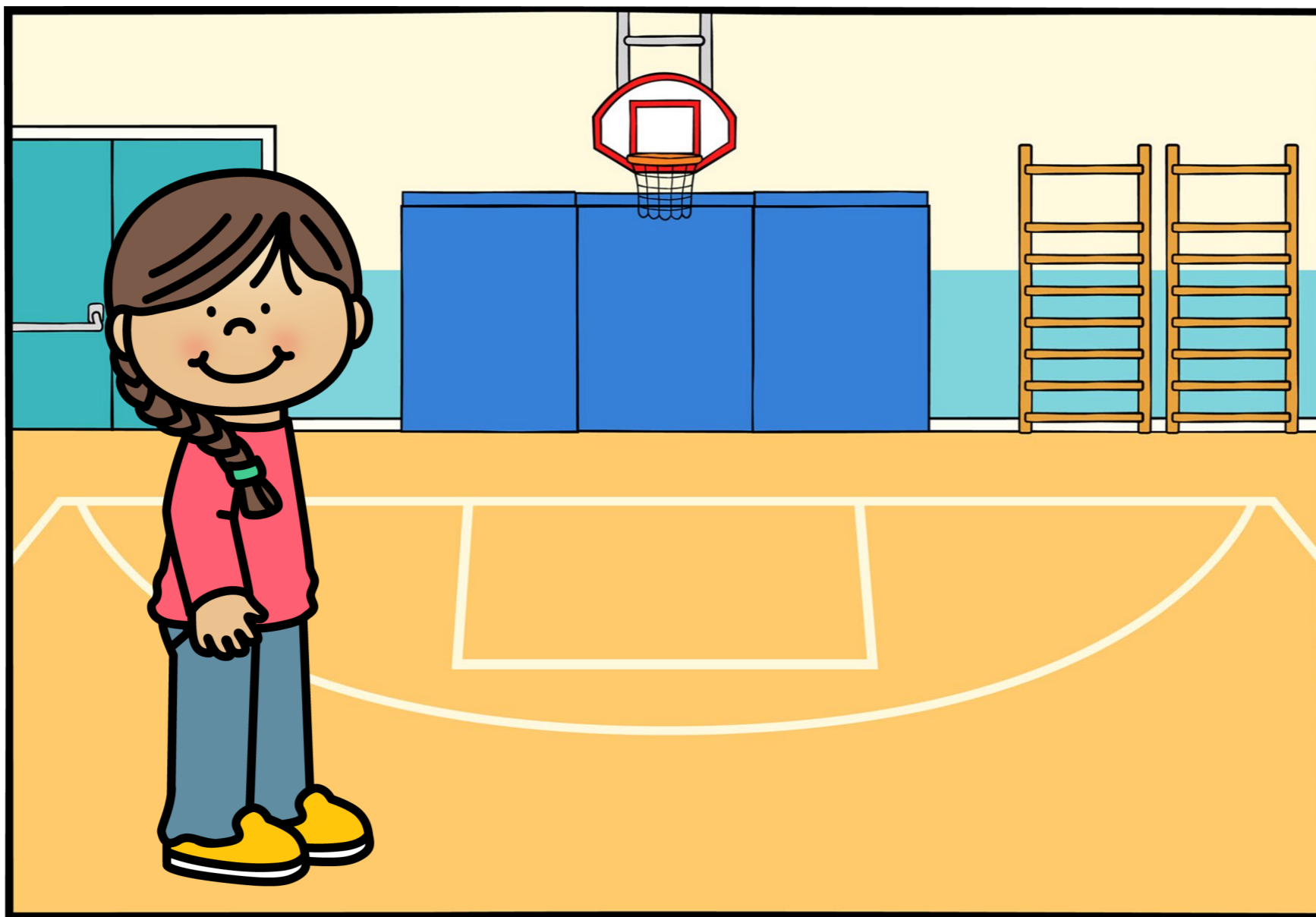


AM  
IS  
ARE



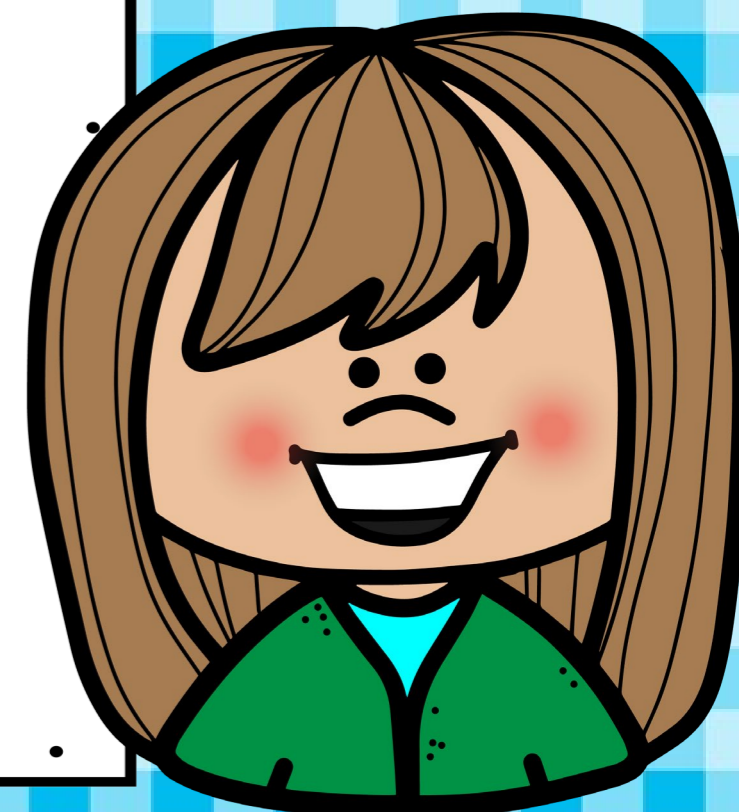
**WHERE ARE**  
**MR. AND MRS. PARKER?**

5

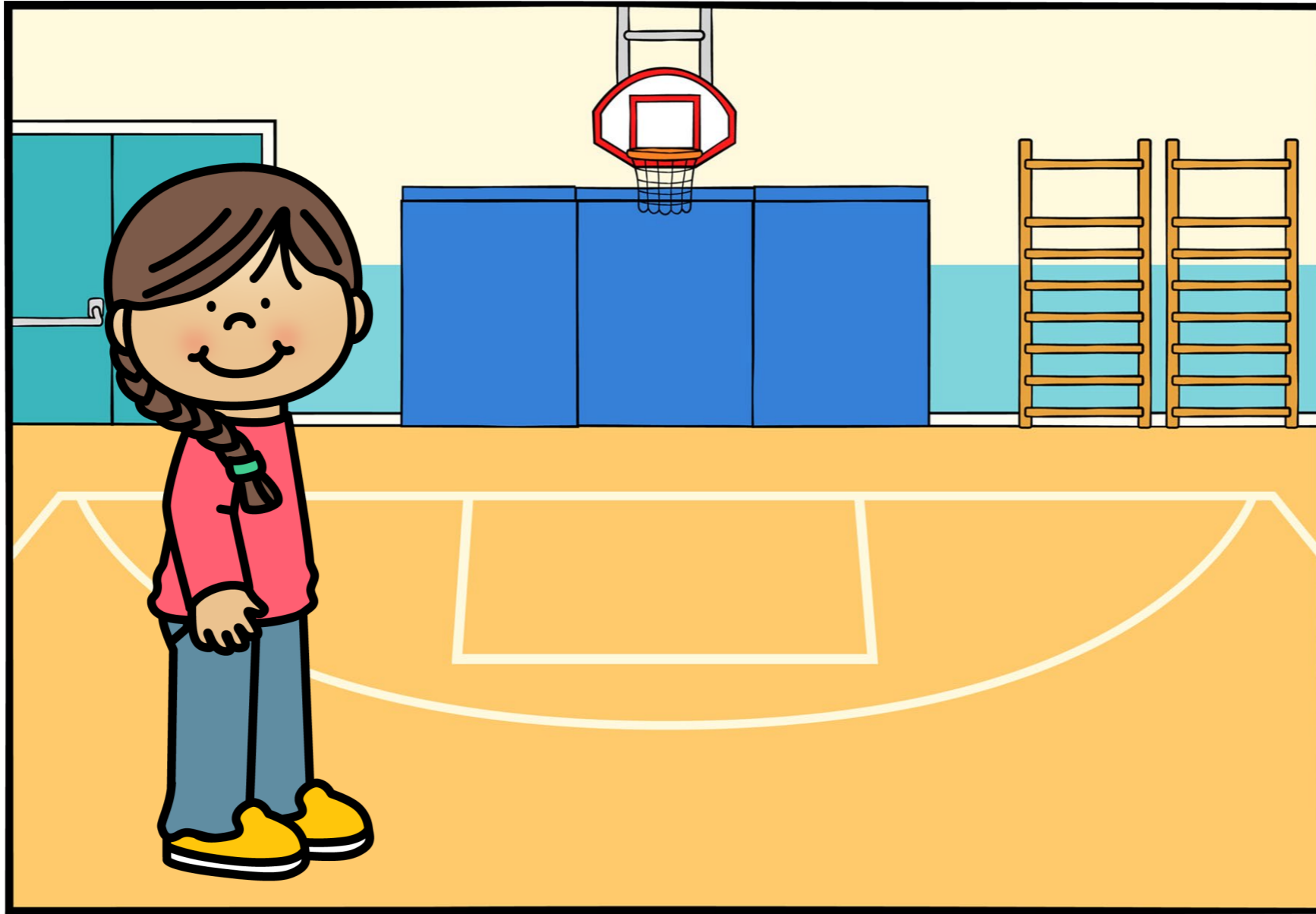


AM  
IS  
ARE

**I ( AM NOT / ISN'T / AREN'T )  
IN THE CLASSROOM.**



5

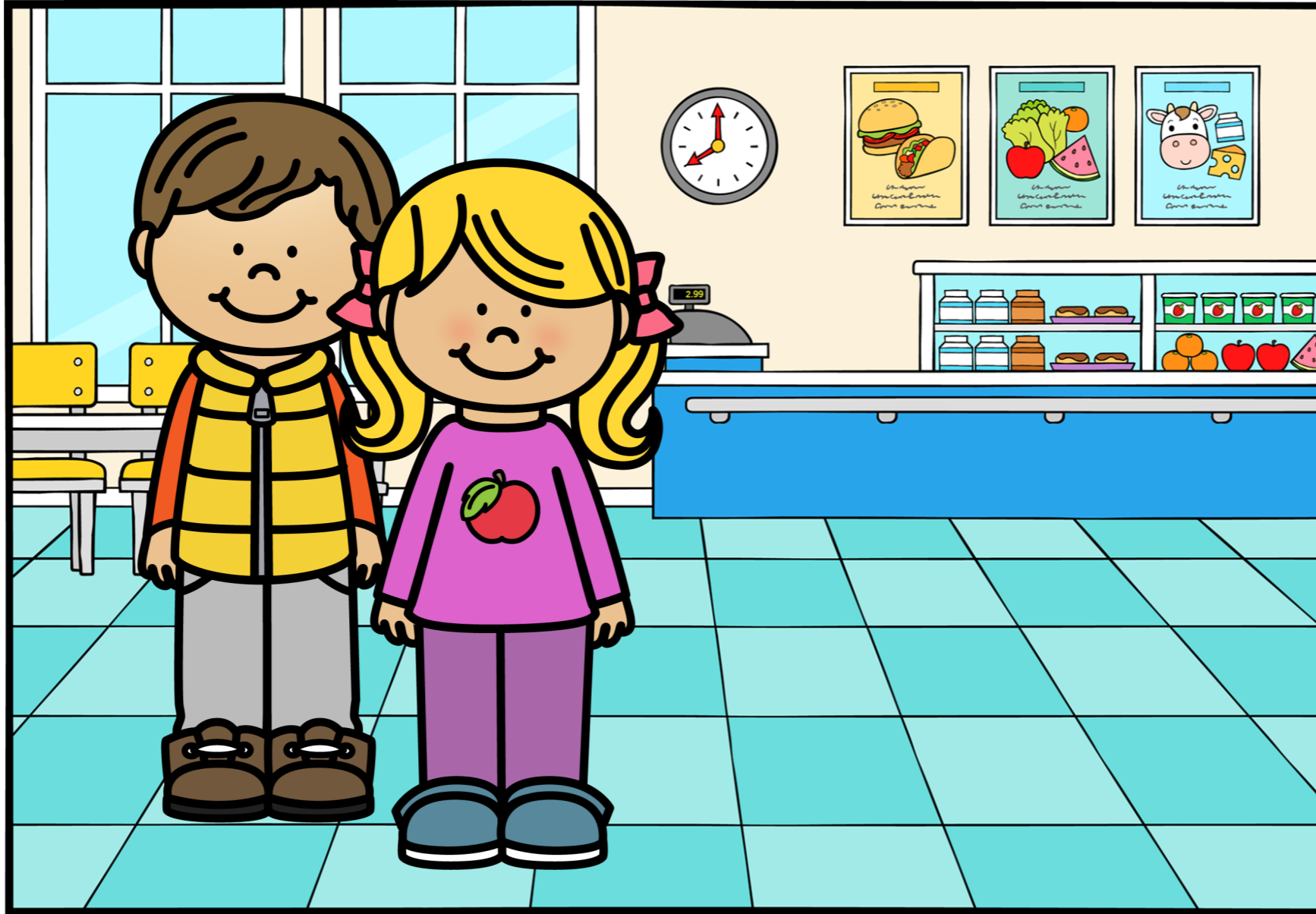


AM  
IS  
ARE

**I AM NOT  
IN THE CLASSROOM.**



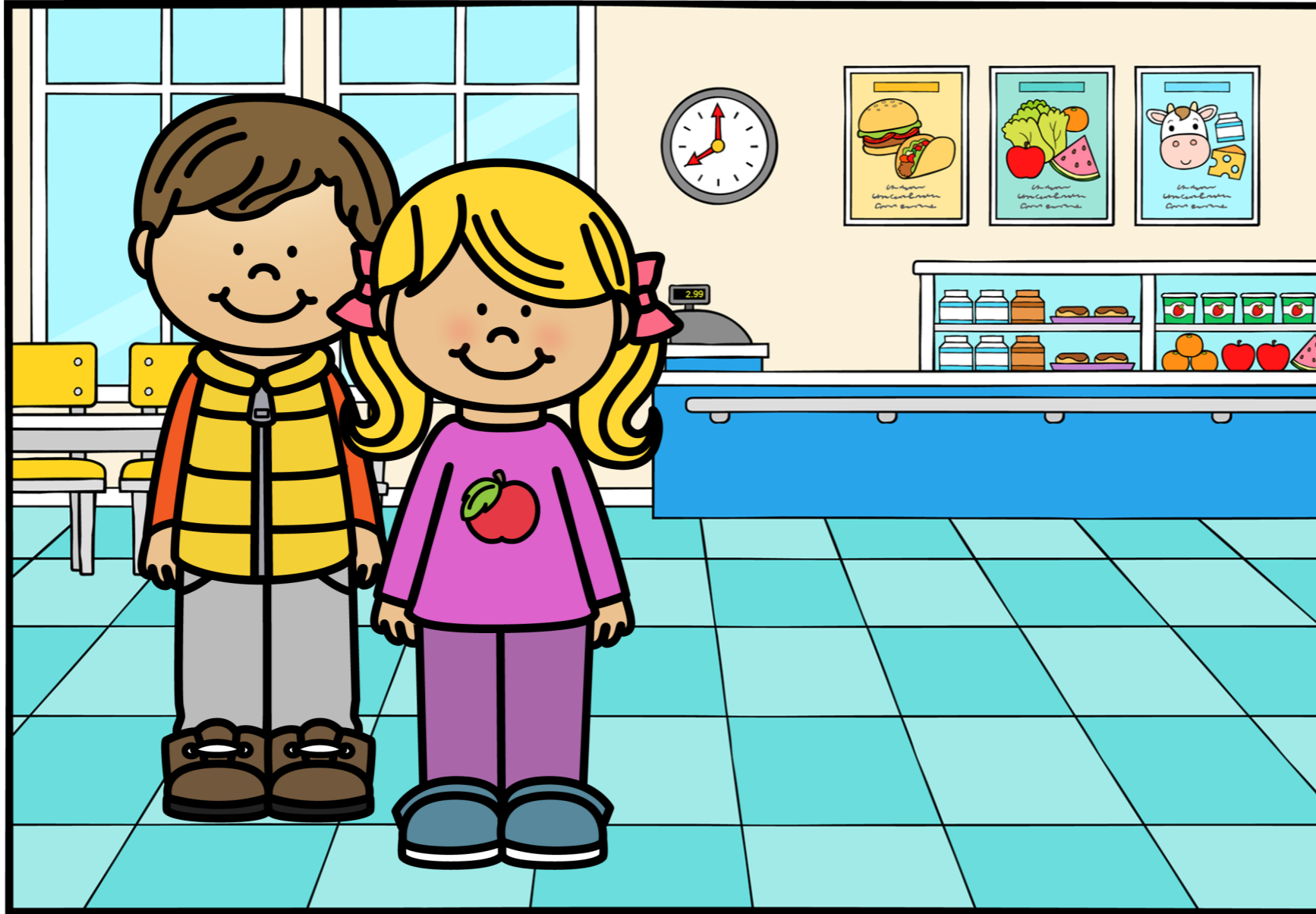
6



**YOU AND EMMA ( AM / IS / ARE )  
IN THE CAFETERIA.**



6



AM  
IS  
ARE



**YOU AND EMMA ARE  
IN THE CAFETERIA.**

7



AM  
IS  
ARE

( AM / IS / ARE ) MRS. FOSTER  
IN THE LIBRARY?



7

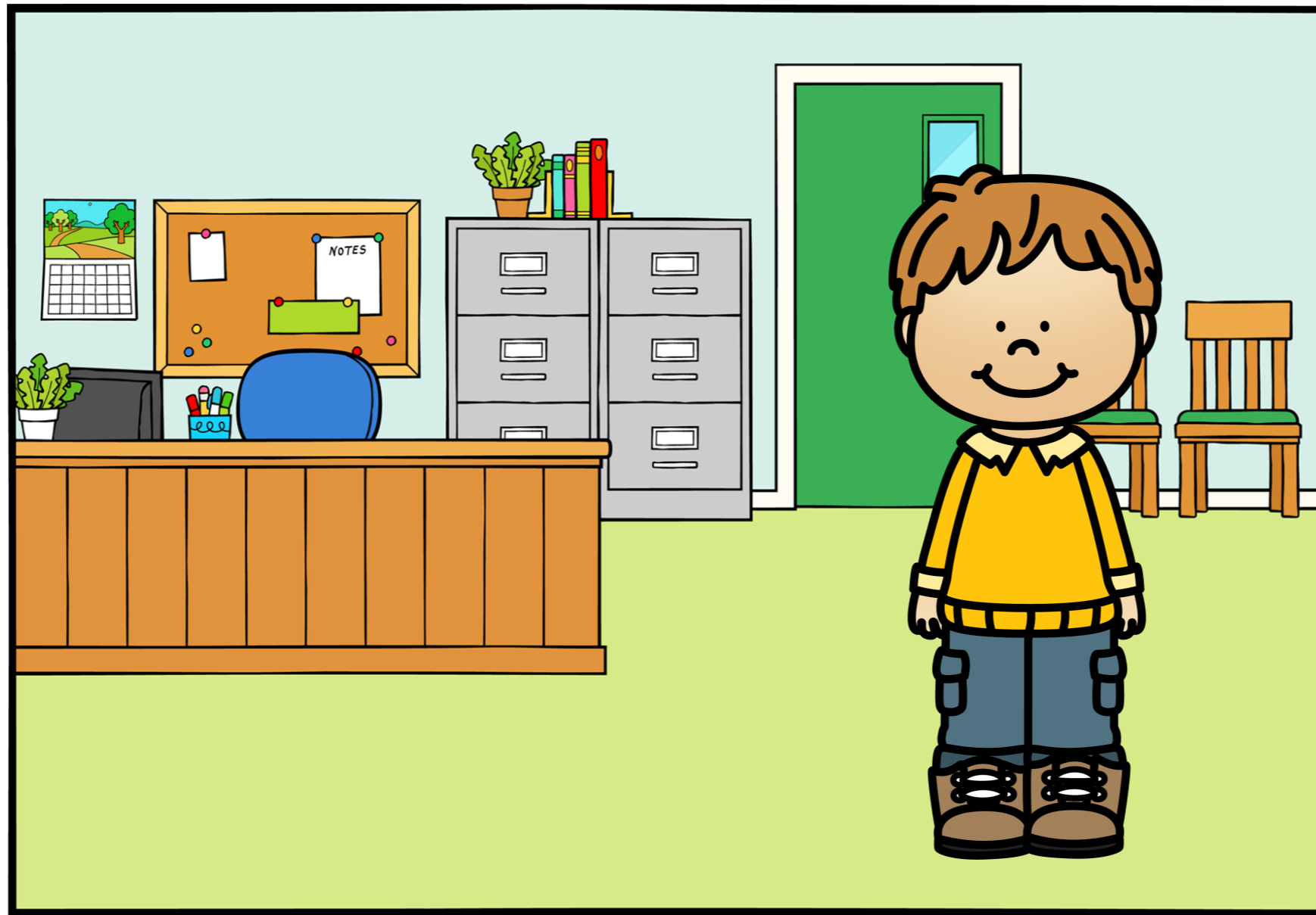


**IS** MRS. FOSTER  
IN THE LIBRARY?

AM  
IS  
ARE



8



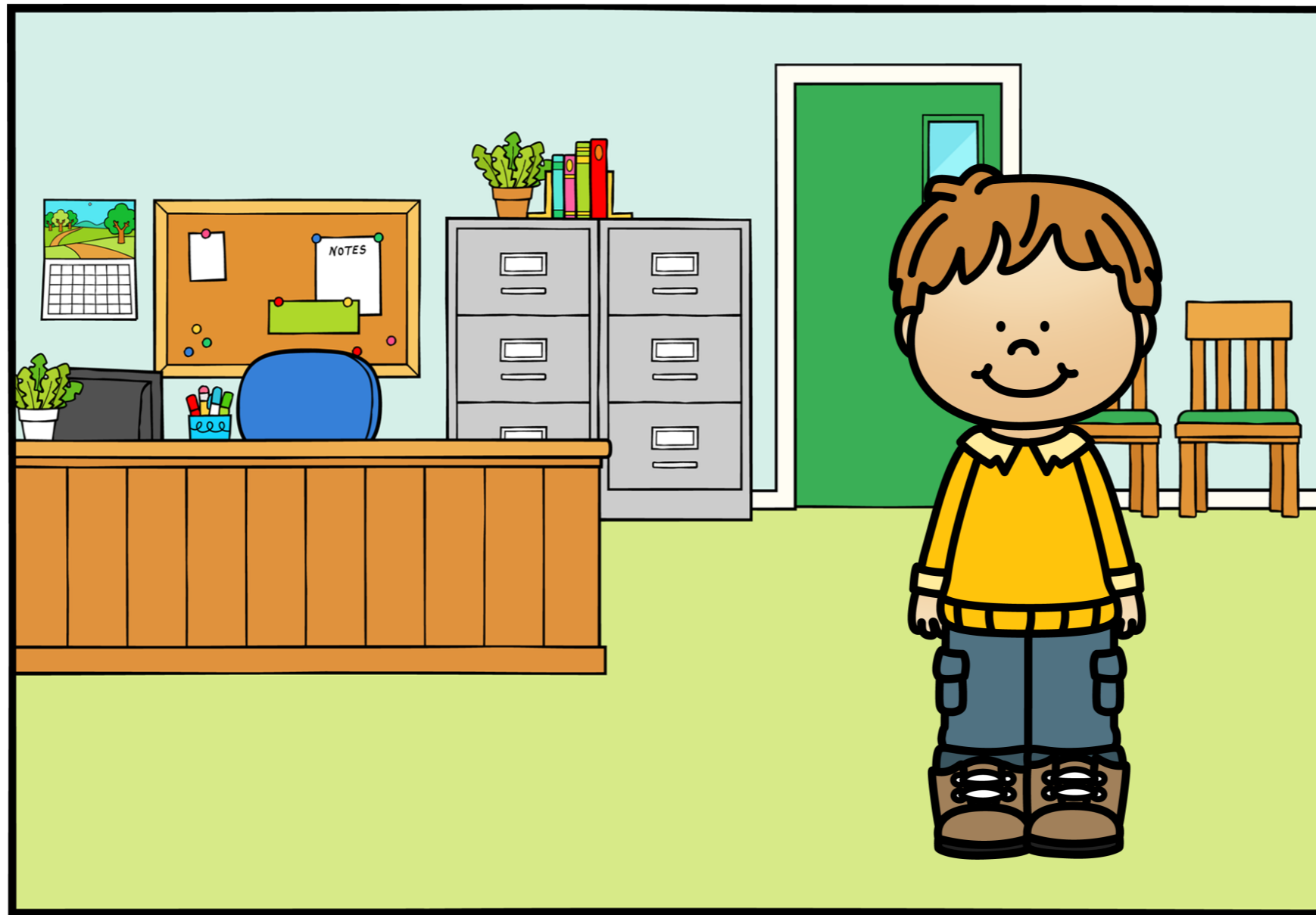
AM  
IS  
ARE

**YOU ( AM NOT / ISN'T / AREN'T )  
IN THE COMPUTER LAB.**



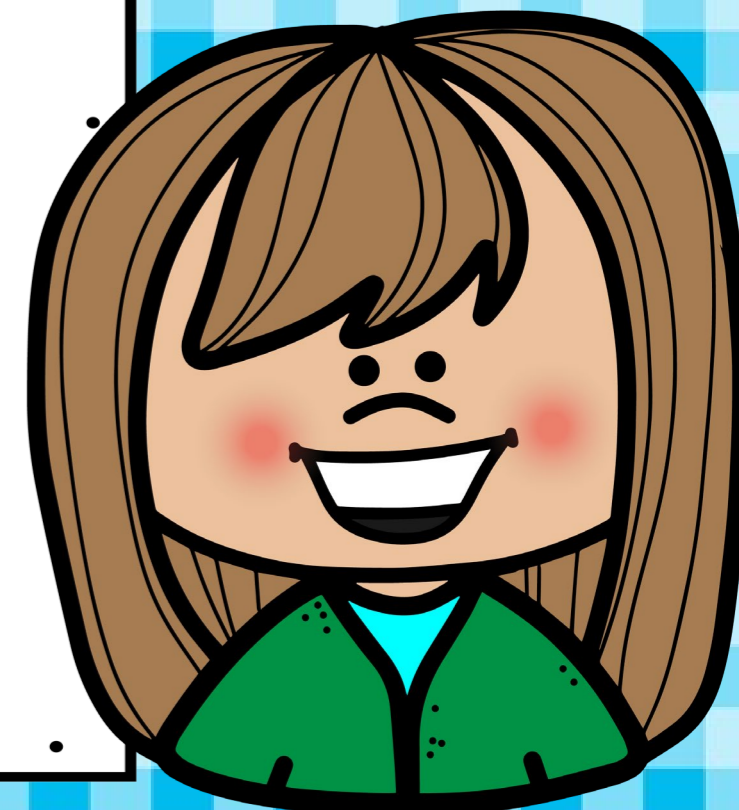


8



AM  
IS  
ARE

**YOU AREN'T  
IN THE COMPUTER LAB.**



9



**( AM / IS / ARE ) THE DOG  
IN THE PLAYGROUND?**

AM  
IS  
ARE



9

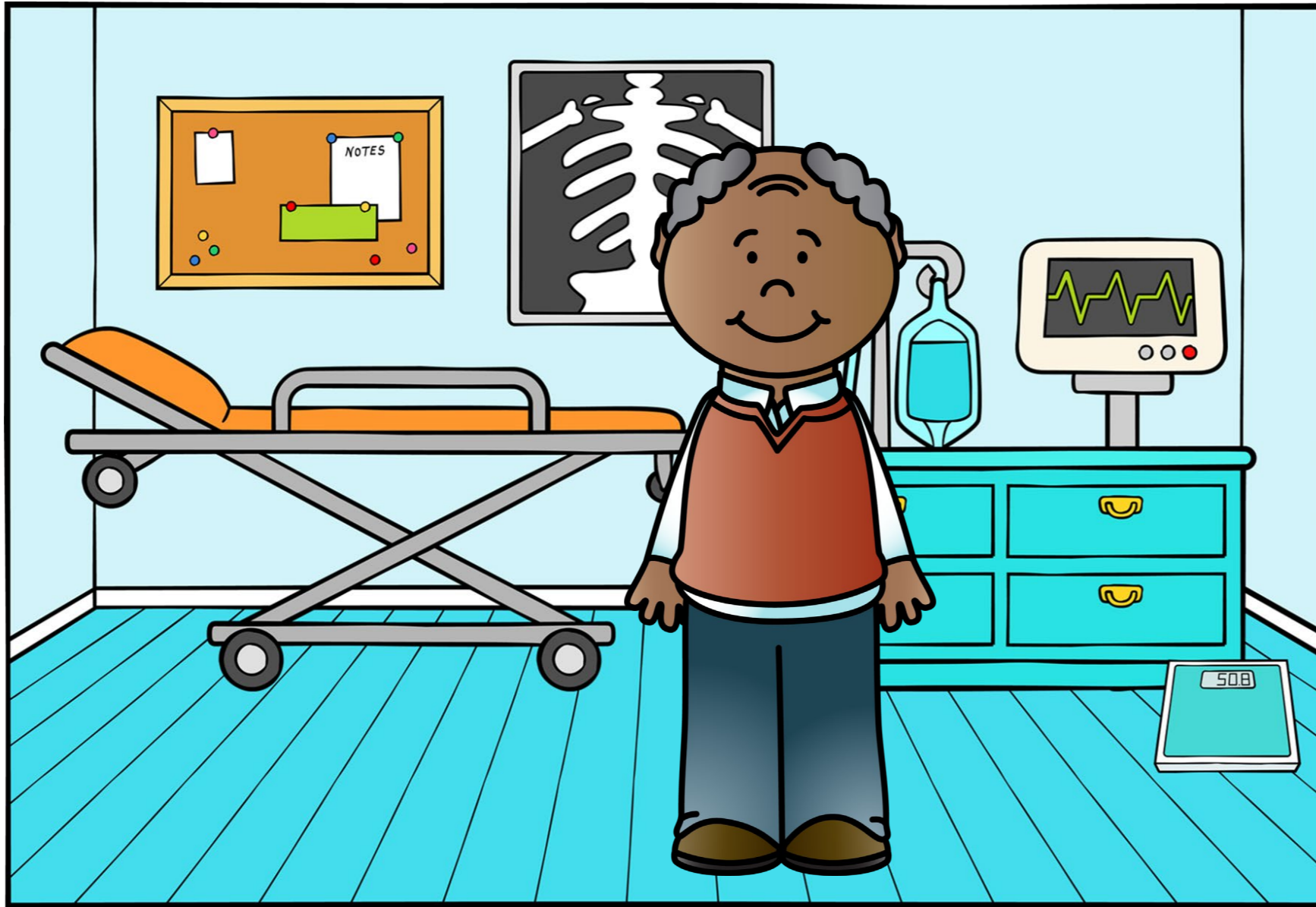


**IS** THE DOG  
**IN THE PLAYGROUND?**

AM  
IS  
ARE



10

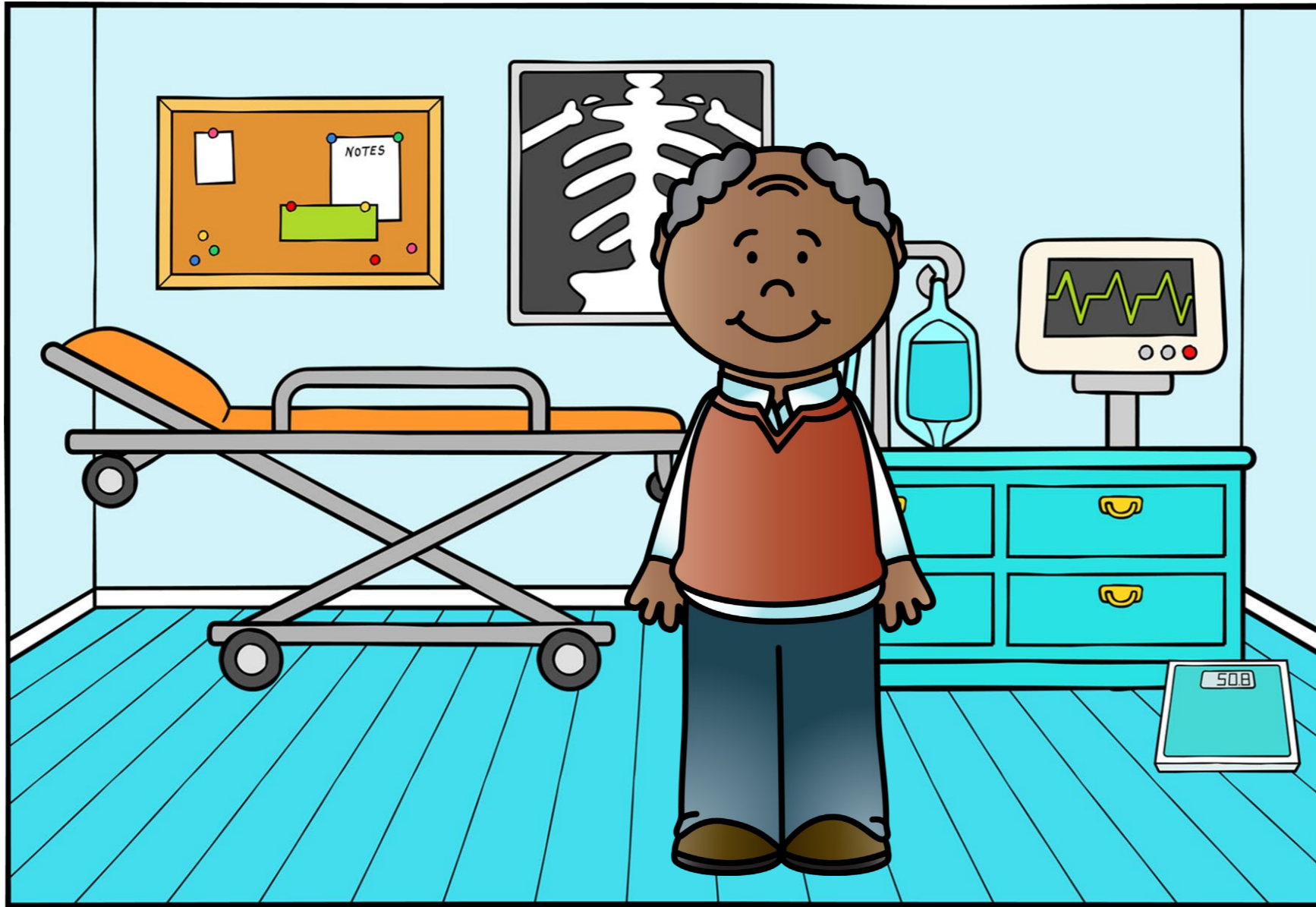


AM  
IS  
ARE



**MR. WATSON ( AM NOT / ISN'T / AREN'T )  
IN THE PRINCIPAL'S OFFICE.**

10

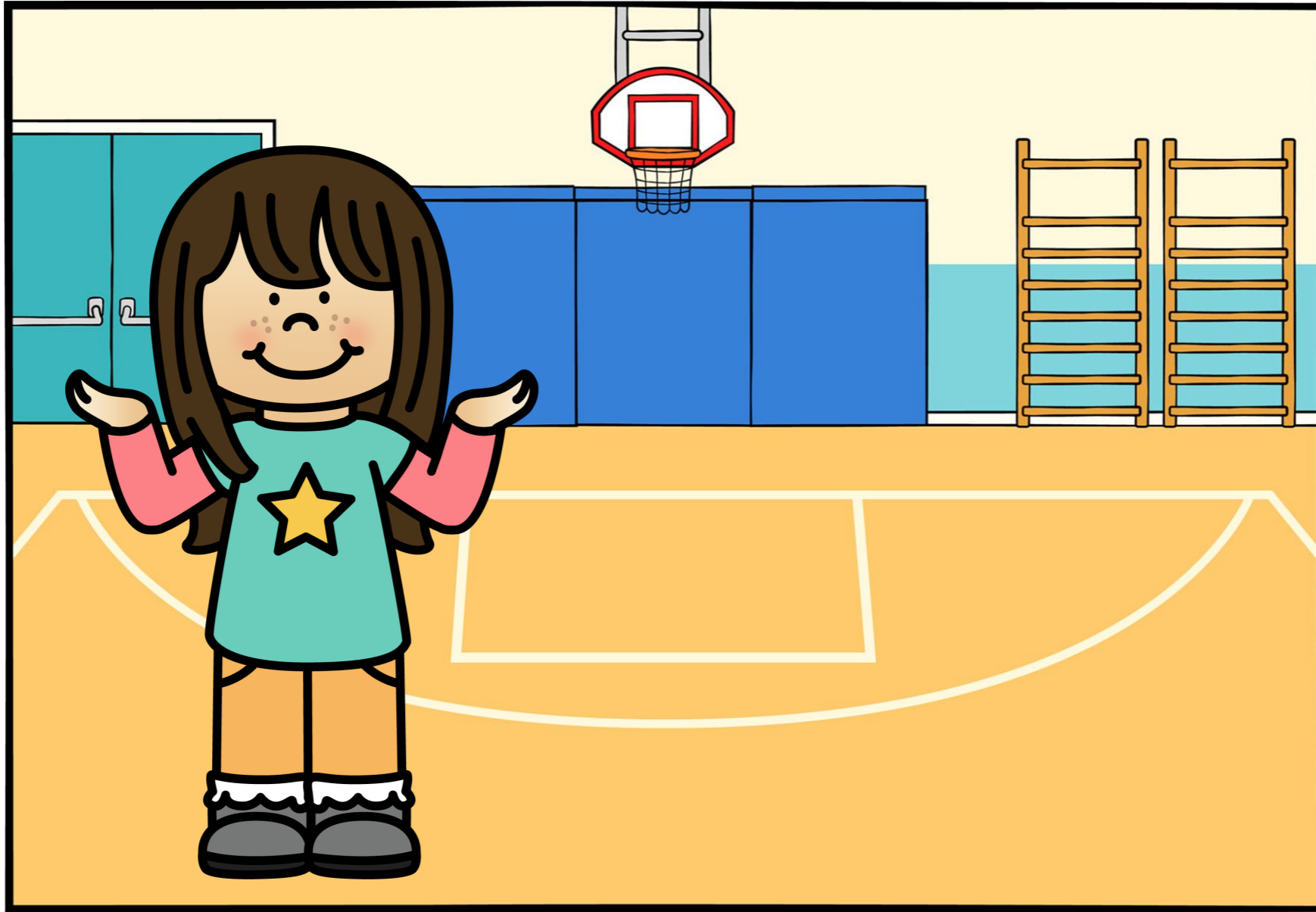


AM  
IS  
ARE



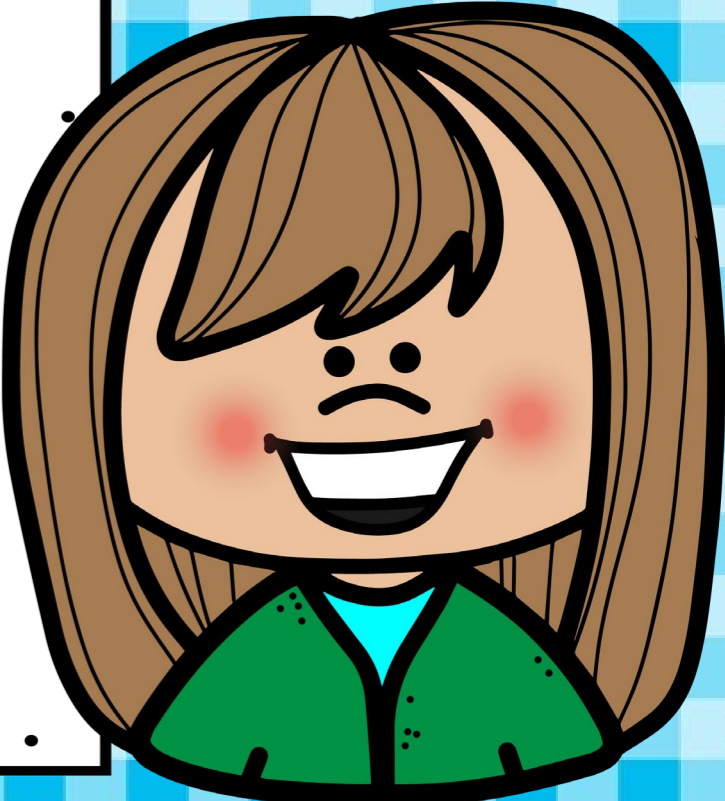
MR. WATSON **ISN'T**  
IN THE PRINCIPAL'S OFFICE.

11

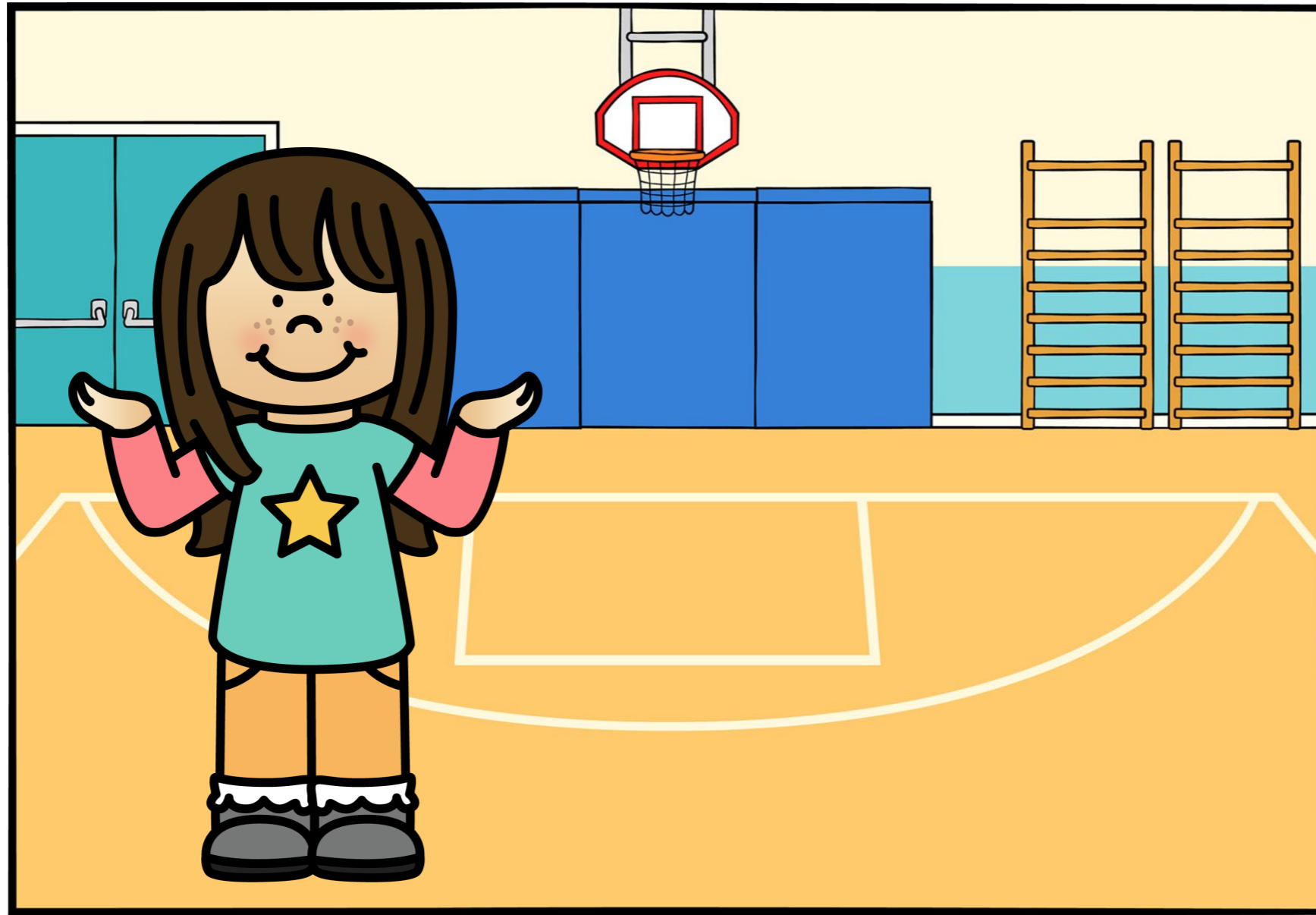


AM  
IS  
ARE

WHERE ( AM / IS / ARE )  
BETTY?



11

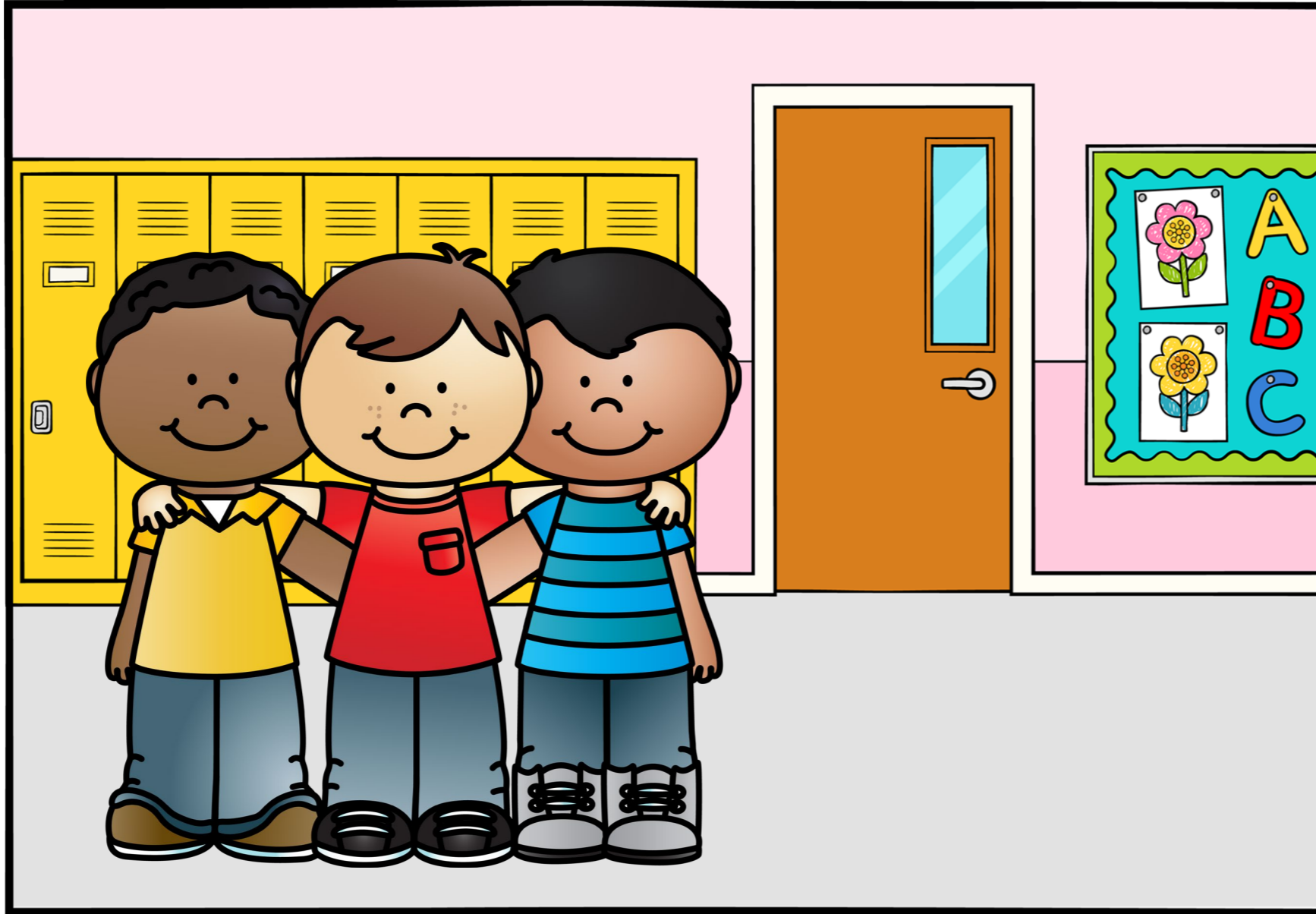


WHERE **IS** BETTY?

AM  
IS  
ARE



12



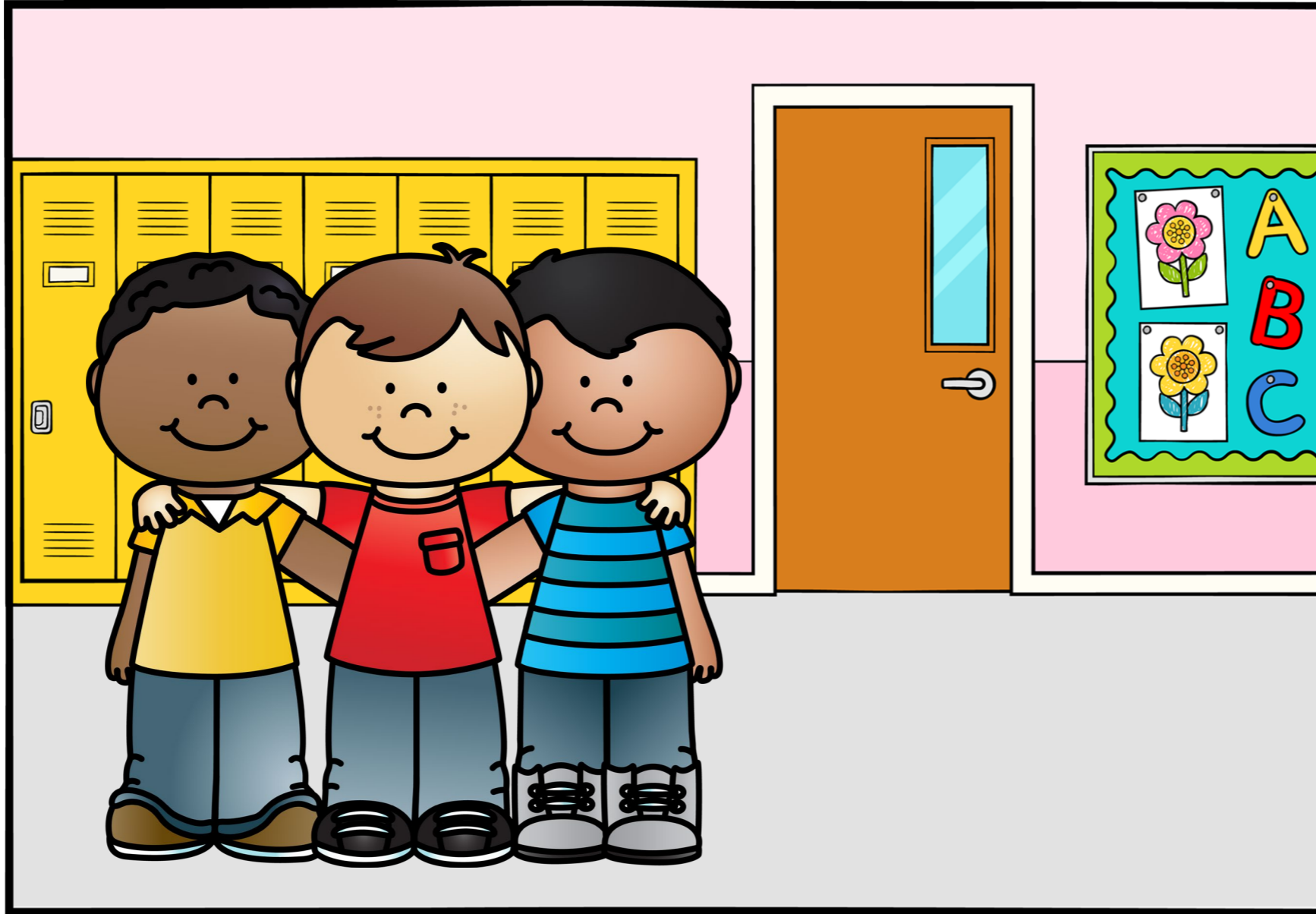
AM  
IS  
ARE

**STEVE, MARK, AND DONALD  
( AM / IS / ARE ) IN THE HALLWAY.**





12



AM  
IS  
ARE



STEVE, MARK, AND DONALD  
**ARE** IN THE HALLWAY.

**DERECHOS DE USO:**

Queda prohibido vender o hacer uso comercial de cualquier parte del material y videos encontrados en el canal de YouTube y sitio web de: Inglés Paso a Paso con Lucie / Cursos de Inglés ATS.

No se puede alterar ninguna parte de este material para venderlo o usarlo como parte de un curso en linea o presencial, editarlo, cargarlo a redes sociales, o hacer cualquier otro uso que no esté autorizado por escrito.

AM  
IS  
ARE

**GRAPHIC CREDITS**



Bubbly Borders and more!

