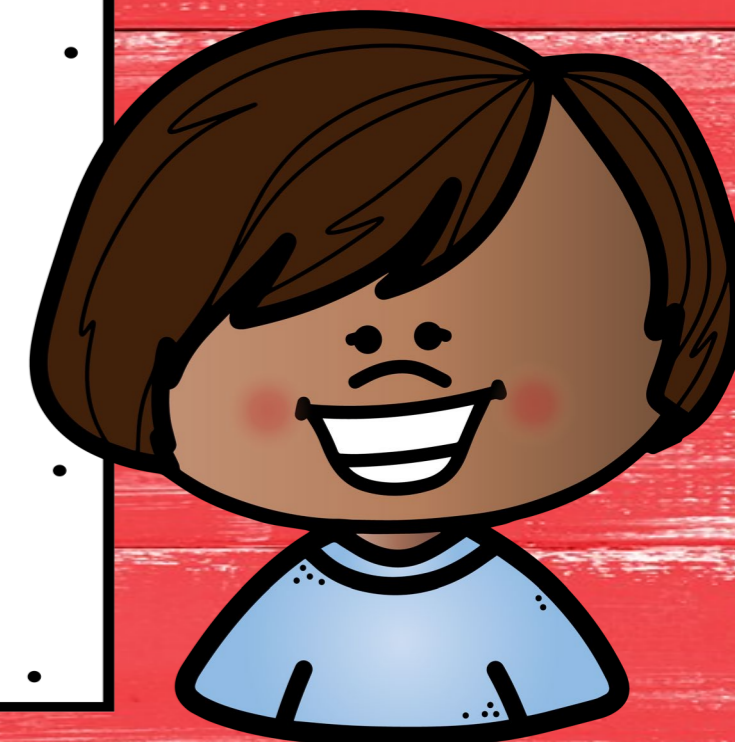


YES / NO QUESTIONS

VERB TO BE

YOU, I, WE

TO BE:
YES / NO
QUESTIONS

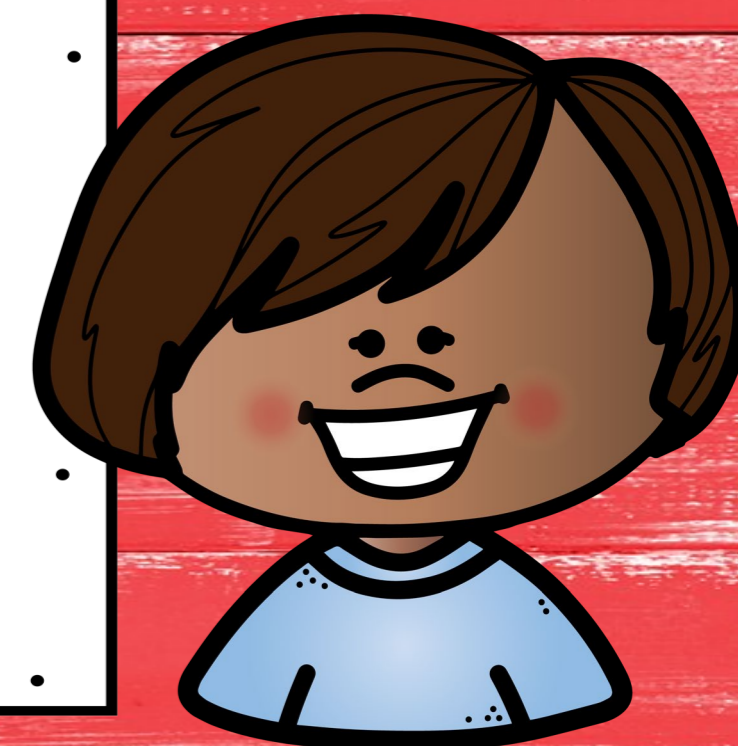


QUESTION	ANSWER
I	YOU
YOU	I
HE	HE
SHE	SHE
IT	IT
WE	YOU
YOU	WE
THEY	THEY



ARE **YOU** IN THE
AUTO SHOP?

TO BE:
YES / NO
QUESTIONS



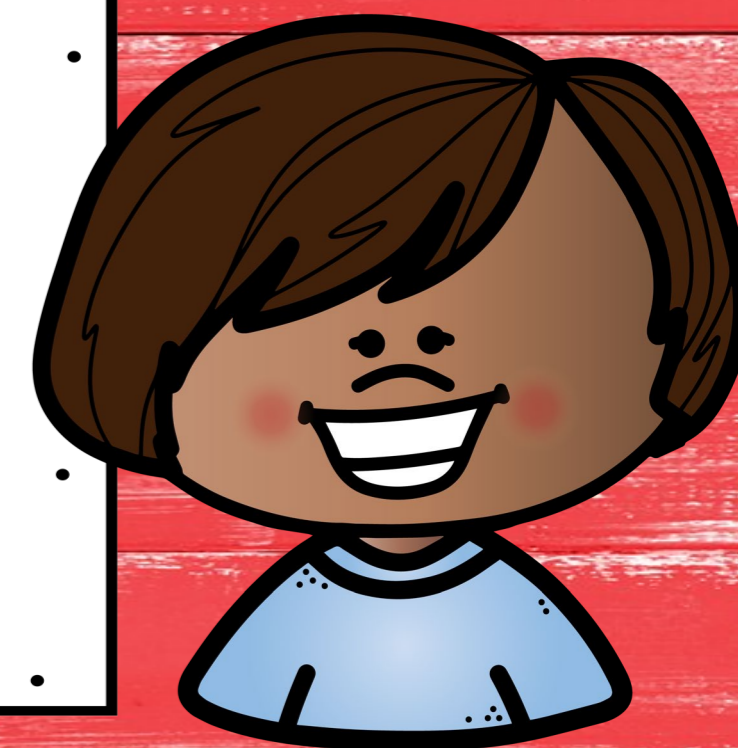
QUESTION	ANSWER
I	YOU
YOU	I
HE	HE
SHE	SHE
IT	IT
WE	YOU
YOU	WE
THEY	THEY



ARE **YOU** IN THE
AUTO SHOP?

YES, I AM.

TO BE:
YES / NO
QUESTIONS



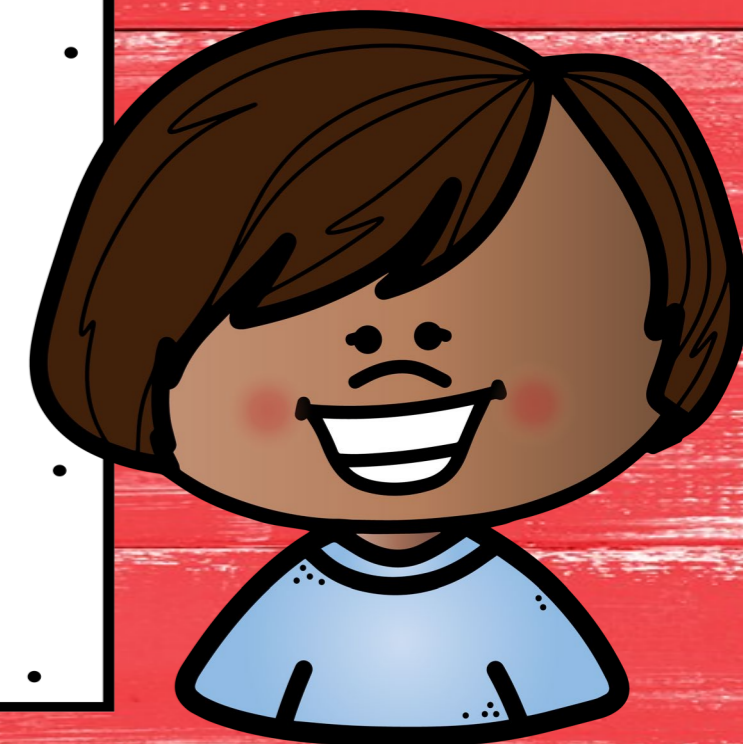


QUESTION	ANSWER
I	YOU
YOU	I
HE	HE
SHE	SHE
IT	IT
WE	YOU
YOU	WE
THEY	THEY



ARE **YOU** IN THE
BOOKSTORE?

TO BE:
YES / NO
QUESTIONS





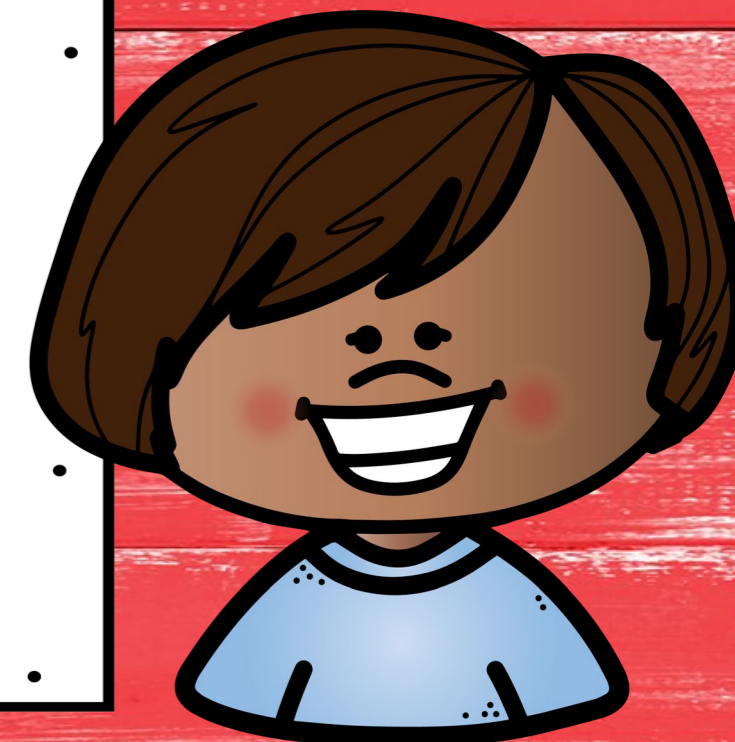
QUESTION	ANSWER
I	YOU
YOU	I
HE	HE
SHE	SHE
IT	IT
WE	YOU
YOU	WE
THEY	THEY



ARE **YOU** IN THE
BOOKSTORE?

NO, WE ARE NOT.

TO BE:
YES / NO
QUESTIONS





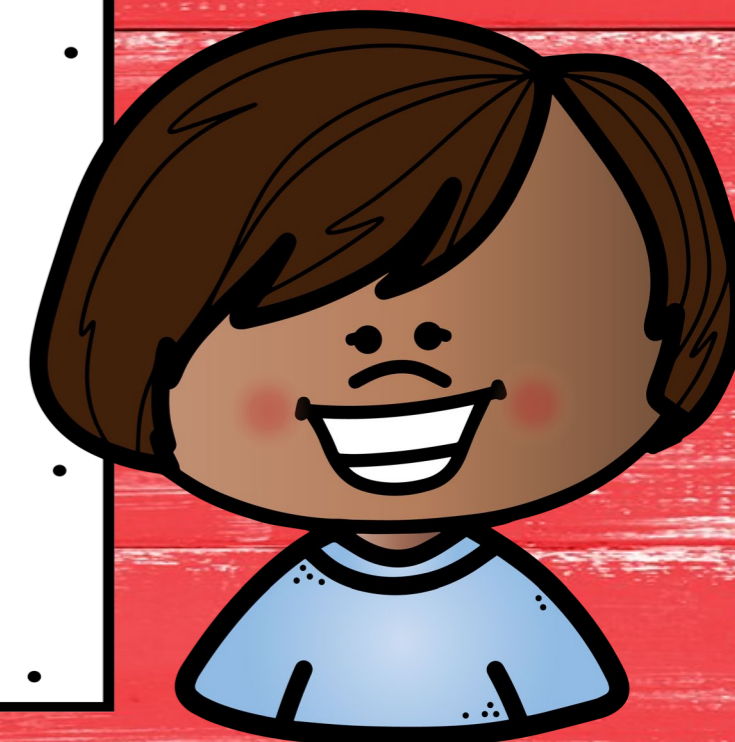
QUESTION	ANSWER
I	YOU
YOU	I
HE	HE
SHE	SHE
IT	IT
WE	YOU
YOU	WE
THEY	THEY



ARE **YOU** IN THE
BOOKSTORE?

NO, WE'RE NOT.

TO BE:
YES / NO
QUESTIONS





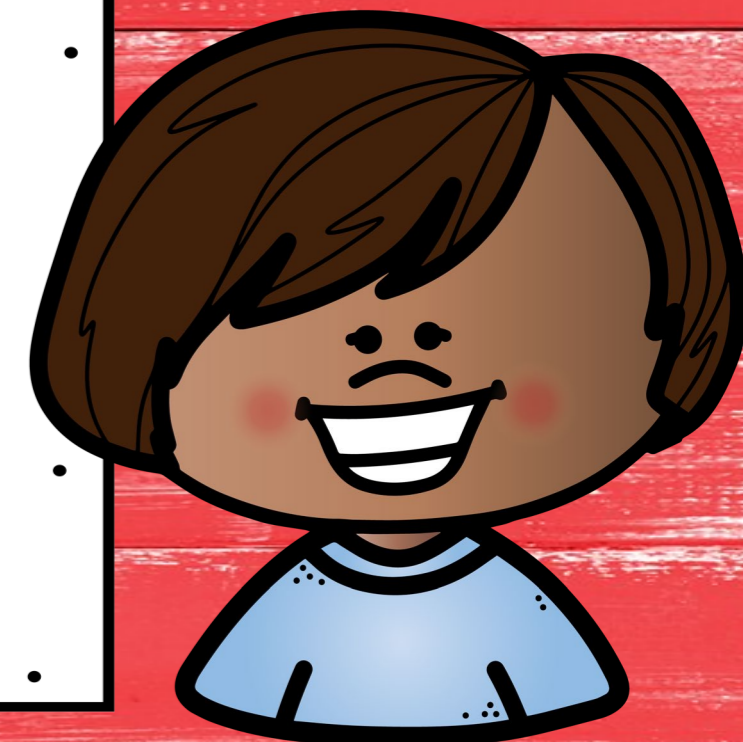
QUESTION	ANSWER
I	YOU
YOU	I
HE	HE
SHE	SHE
IT	IT
WE	YOU
YOU	WE
THEY	THEY



ARE **YOU** IN THE
BOOKSTORE?

NO, WE AREN'T.

TO BE:
YES / NO
QUESTIONS



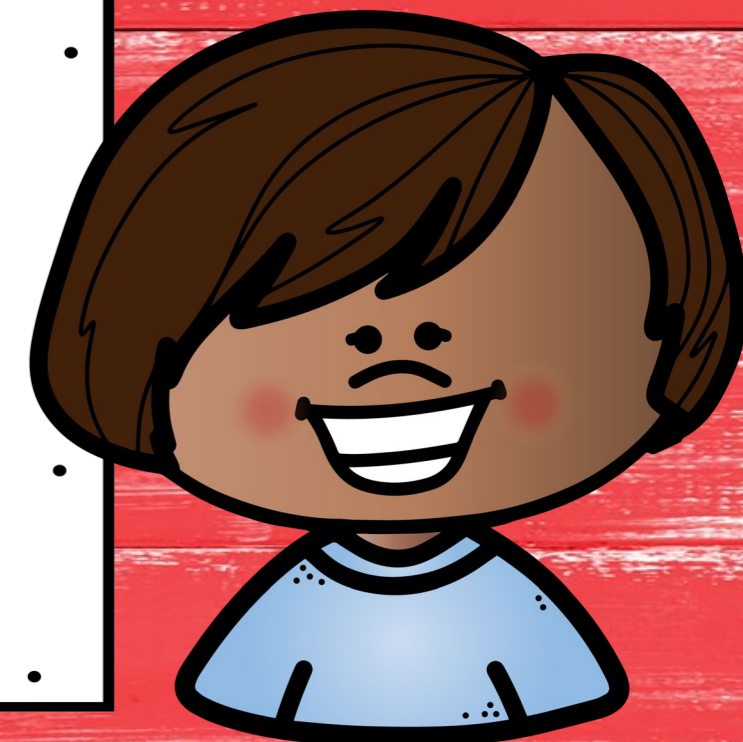


QUESTION	ANSWER
I	YOU
YOU	I
HE	HE
SHE	SHE
IT	IT
WE	YOU
YOU	WE
THEY	THEY



**WE'RE IN THE
TOY STORE.**

**TO BE:
YES / NO
QUESTIONS**



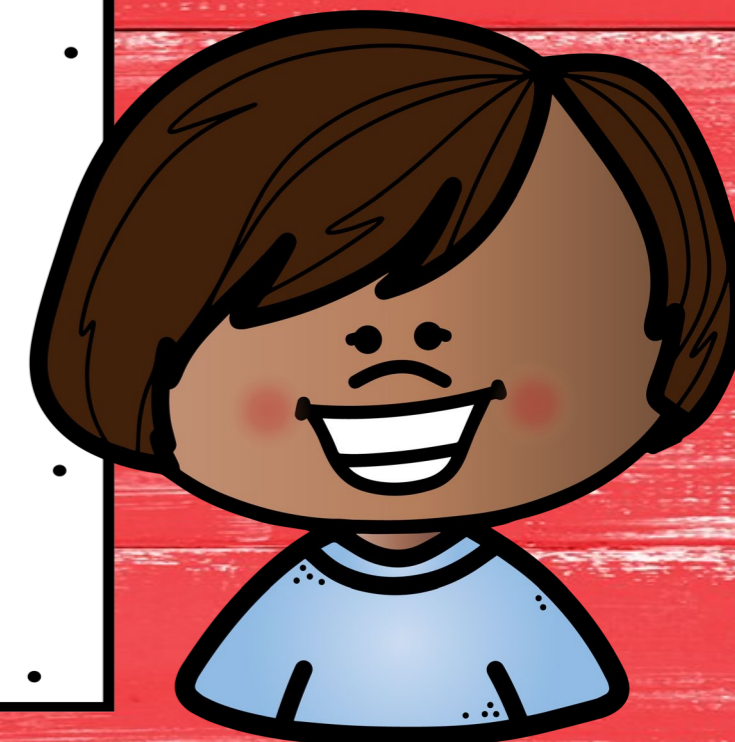


QUESTION	ANSWER
I	YOU
YOU	I
HE	HE
SHE	SHE
IT	IT
WE	YOU
YOU	WE
THEY	THEY



ARE **YOU** IN THE
COFFEE SHOP?

TO BE:
YES / NO
QUESTIONS





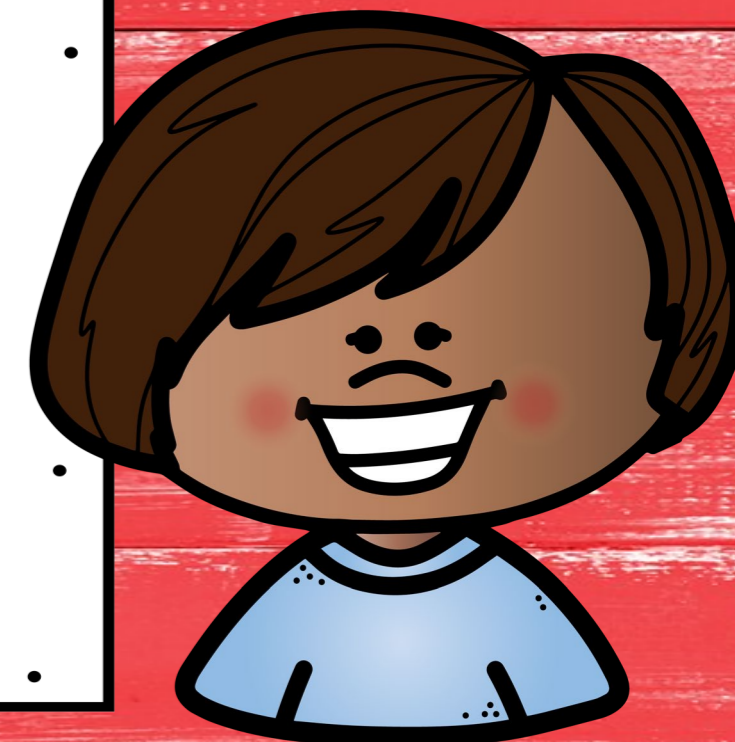
QUESTION	ANSWER
I	YOU
YOU	I
HE	HE
SHE	SHE
IT	IT
WE	YOU
YOU	WE
THEY	THEY



ARE **YOU** IN THE
COFFEE SHOP?

YES, WE ARE.

TO BE:
YES / NO
QUESTIONS



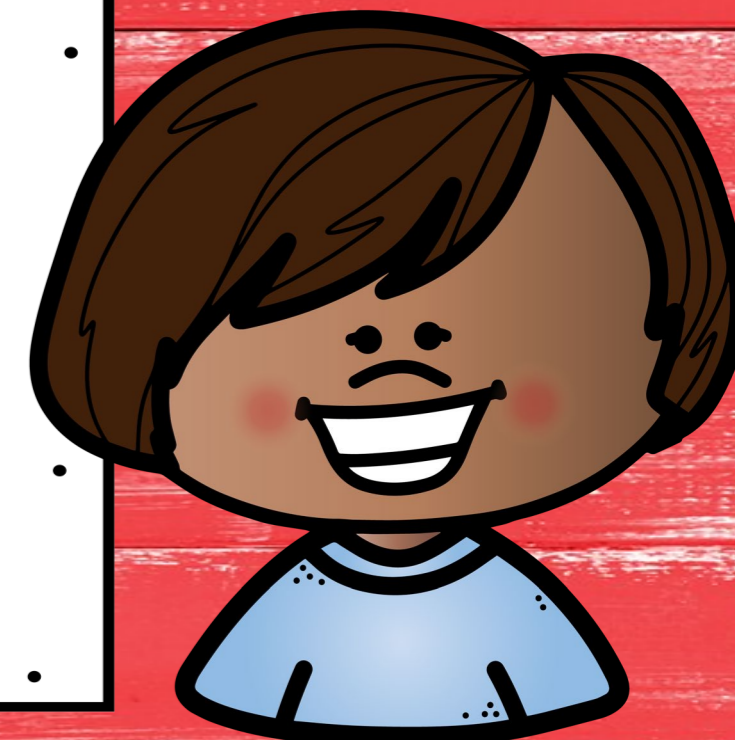


QUESTION	ANSWER
I	YOU
YOU	I
HE	HE
SHE	SHE
IT	IT
WE	YOU
YOU	WE
THEY	THEY



ARE **YOU** IN THE
DESSERT SHOP?

TO BE:
YES / NO
QUESTIONS





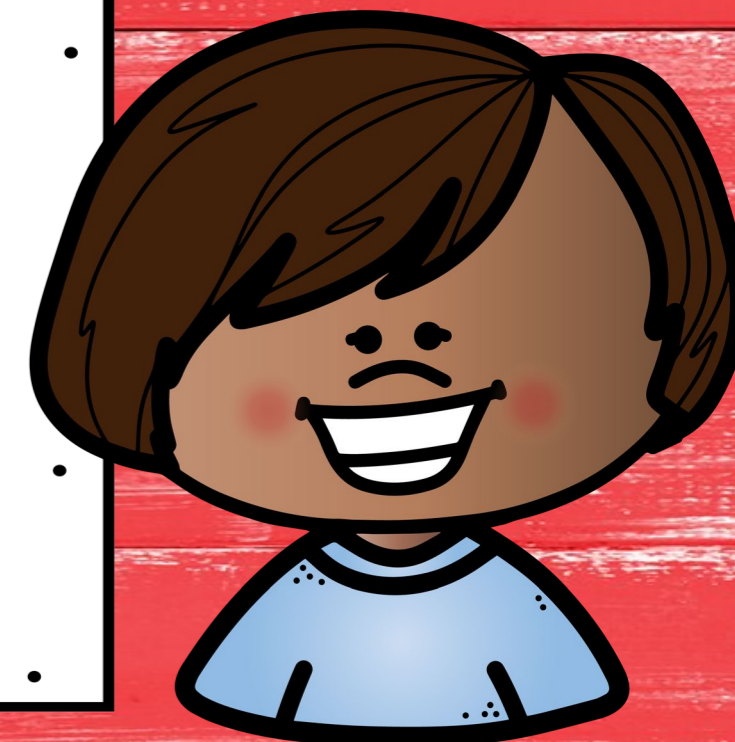
QUESTION	ANSWER
I	YOU
YOU	I
HE	HE
SHE	SHE
IT	IT
WE	YOU
YOU	WE
THEY	THEY



ARE **YOU** IN THE
DESSERT SHOP?

NO, I AM NOT.

TO BE:
YES / NO
QUESTIONS





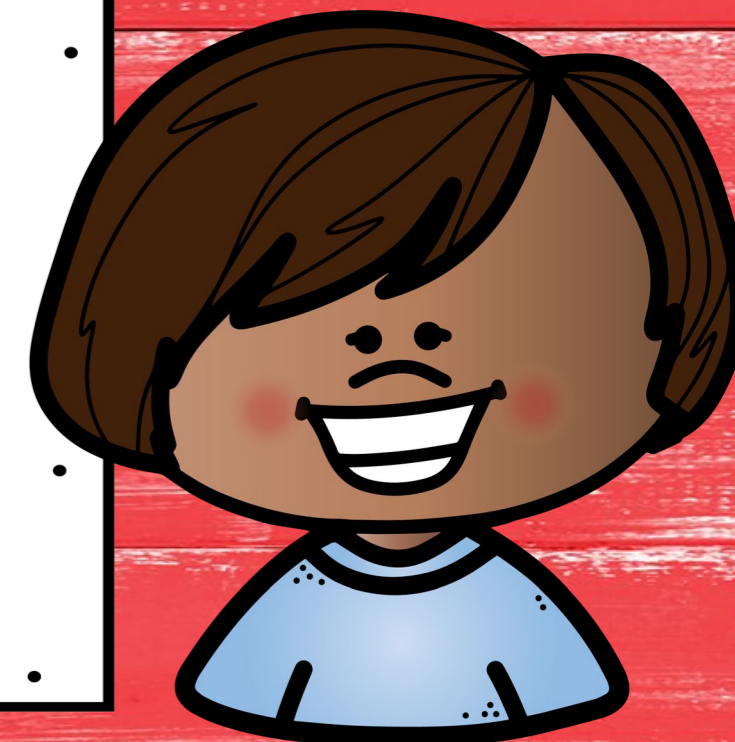
QUESTION	ANSWER
I	YOU
YOU	I
HE	HE
SHE	SHE
IT	IT
WE	YOU
YOU	WE
THEY	THEY



ARE **YOU** IN THE
DESSERT SHOP?

NO, I'M NOT.

TO BE:
YES / NO
QUESTIONS



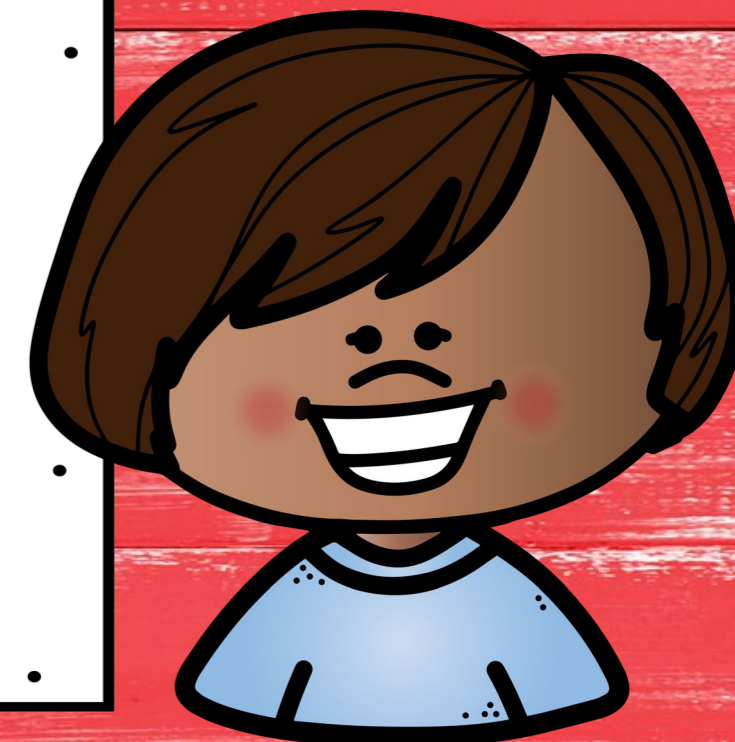


QUESTION	ANSWER
I	YOU
YOU	I
HE	HE
SHE	SHE
IT	IT
WE	YOU
YOU	WE
THEY	THEY



ARE **YOU** IN THE
FLOWER SHOP?

TO BE:
YES / NO
QUESTIONS





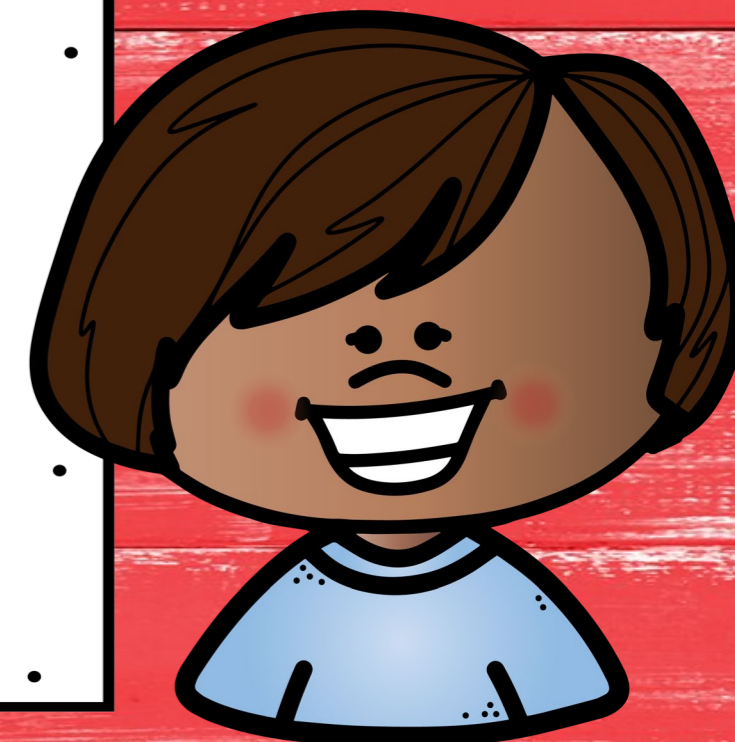
QUESTION	ANSWER
I	YOU
YOU	I
HE	HE
SHE	SHE
IT	IT
WE	YOU
YOU	WE
THEY	THEY



ARE **YOU** IN THE
FLOWER SHOP?

YES, I AM.

TO BE:
YES / NO
QUESTIONS



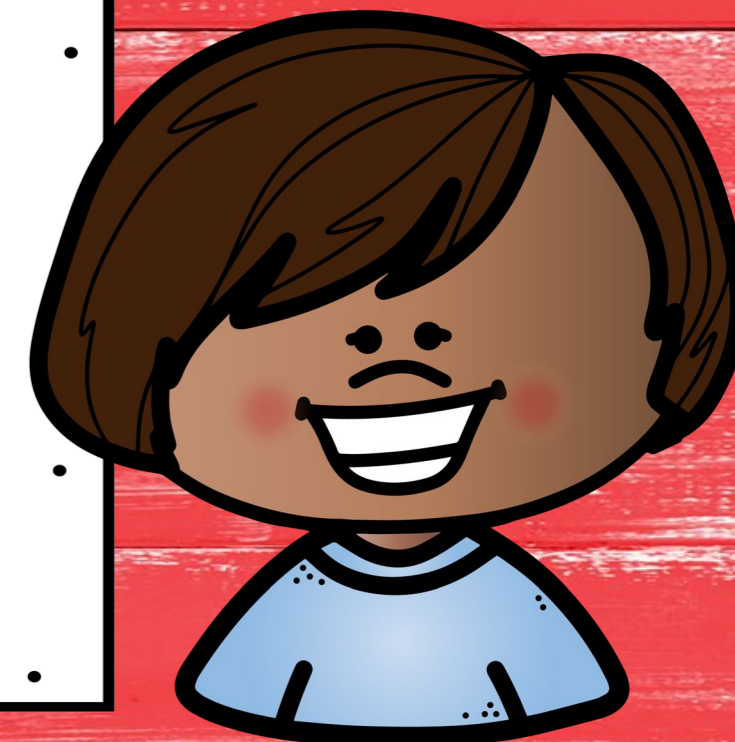


QUESTION	ANSWER
I	YOU
YOU	I
HE	HE
SHE	SHE
IT	IT
WE	YOU
YOU	WE
THEY	THEY



ARE **YOU** IN THE
GIFT SHOP?

TO BE:
YES / NO
QUESTIONS





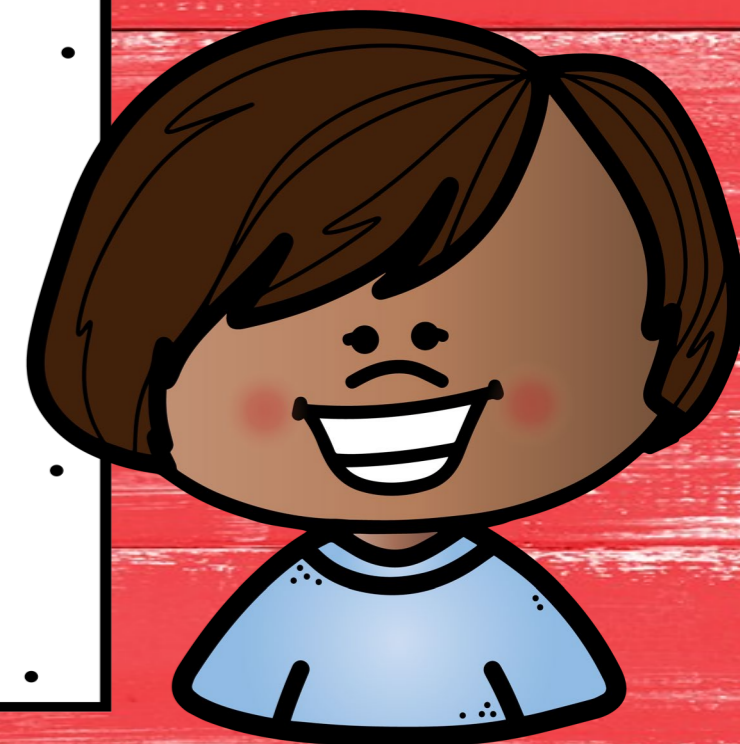
QUESTION	ANSWER
I	YOU
YOU	I
HE	HE
SHE	SHE
IT	IT
WE	YOU
YOU	WE
THEY	THEY



ARE **YOU** IN THE
GIFT SHOP?

NO, WE ARE NOT.

TO BE:
YES / NO
QUESTIONS





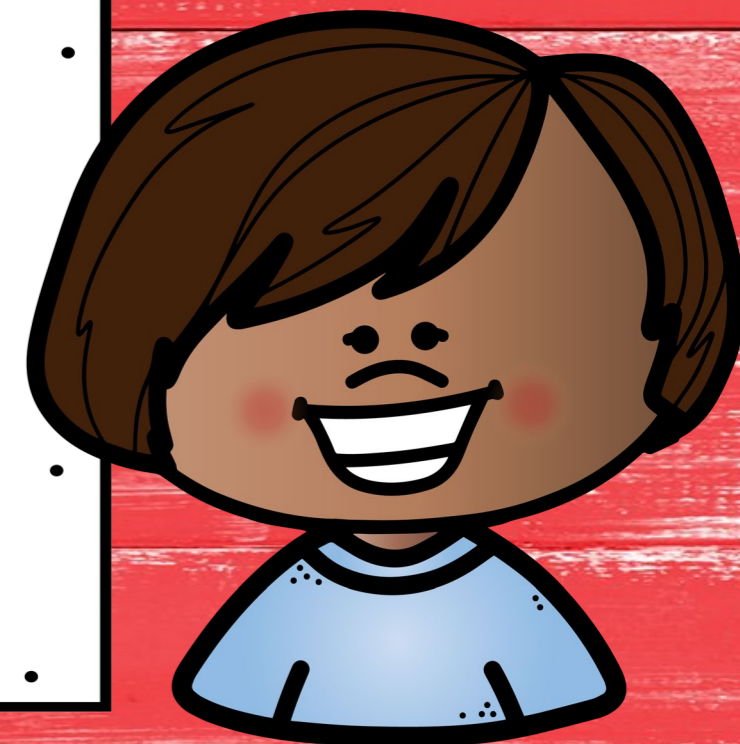
QUESTION	ANSWER
I	YOU
YOU	I
HE	HE
SHE	SHE
IT	IT
WE	YOU
YOU	WE
THEY	THEY



ARE **YOU** IN THE
GIFT SHOP?

NO, WE'RE NOT.

TO BE:
YES / NO
QUESTIONS





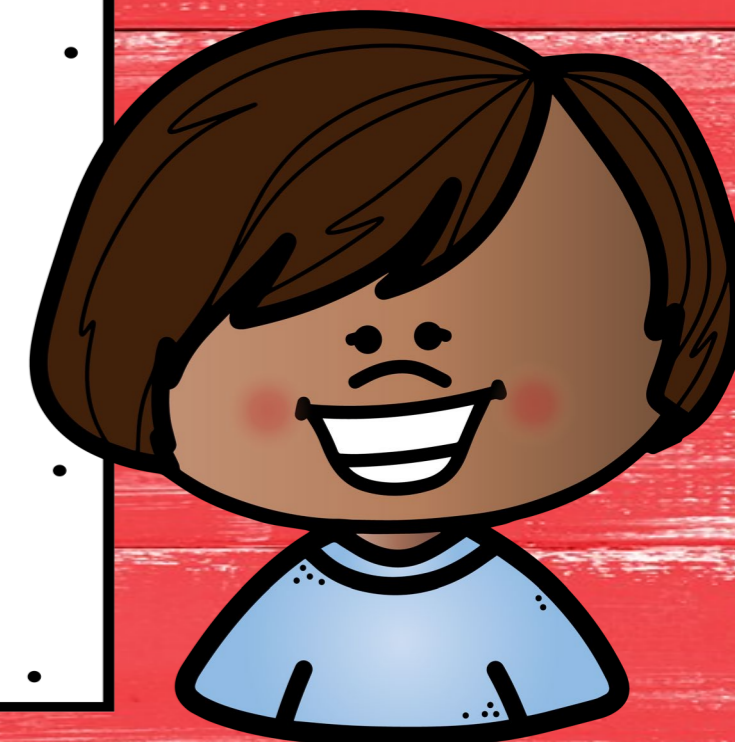
QUESTION	ANSWER
I	YOU
YOU	I
HE	HE
SHE	SHE
IT	IT
WE	YOU
YOU	WE
THEY	THEY



ARE **YOU** IN THE
GIFT SHOP?

NO, WE AREN'T.

TO BE:
YES / NO
QUESTIONS



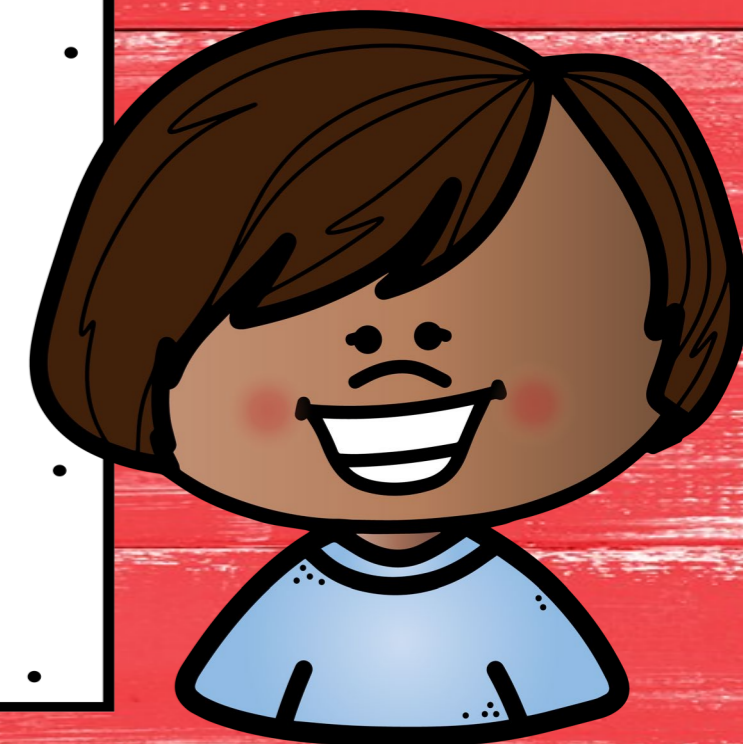


QUESTION	ANSWER
I	YOU
YOU	I
HE	HE
SHE	SHE
IT	IT
WE	YOU
YOU	WE
THEY	THEY



**WE ARE IN THE
ICE CREAM SHOP.**

**TO BE:
YES / NO
QUESTIONS**



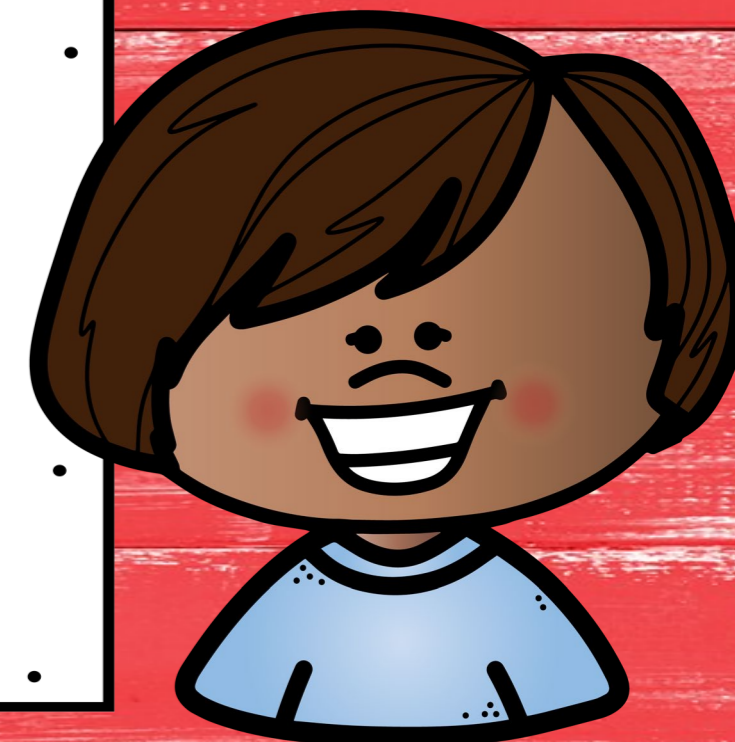


QUESTION	ANSWER
I	YOU
YOU	I
HE	HE
SHE	SHE
IT	IT
WE	YOU
YOU	WE
THEY	THEY



ARE **YOU** IN THE
GROCERY STORE?

TO BE:
YES / NO
QUESTIONS





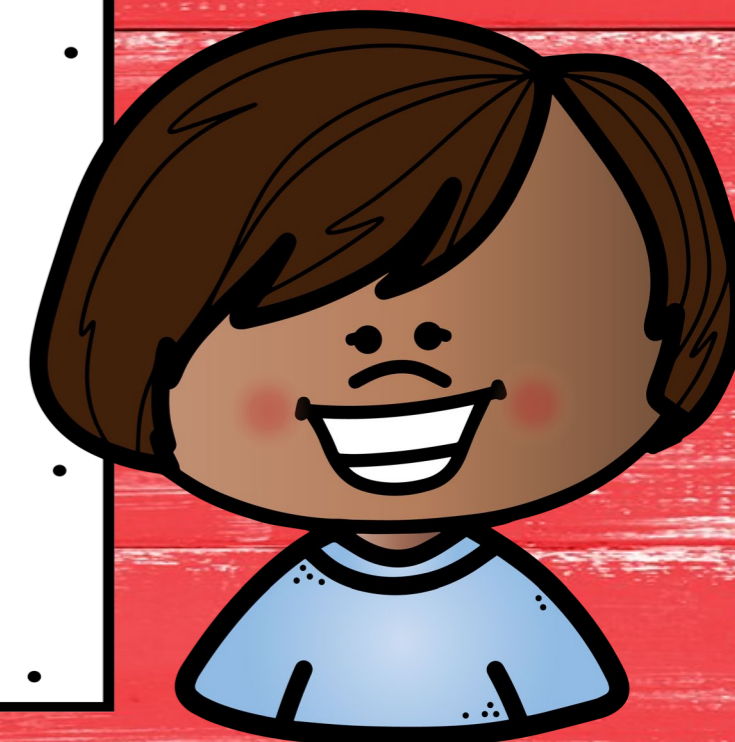
QUESTION	ANSWER
I	YOU
YOU	I
HE	HE
SHE	SHE
IT	IT
WE	YOU
YOU	WE
THEY	THEY



ARE **YOU** IN THE
GROCERY STORE?

NO, I AM NOT.

TO BE:
YES / NO
QUESTIONS





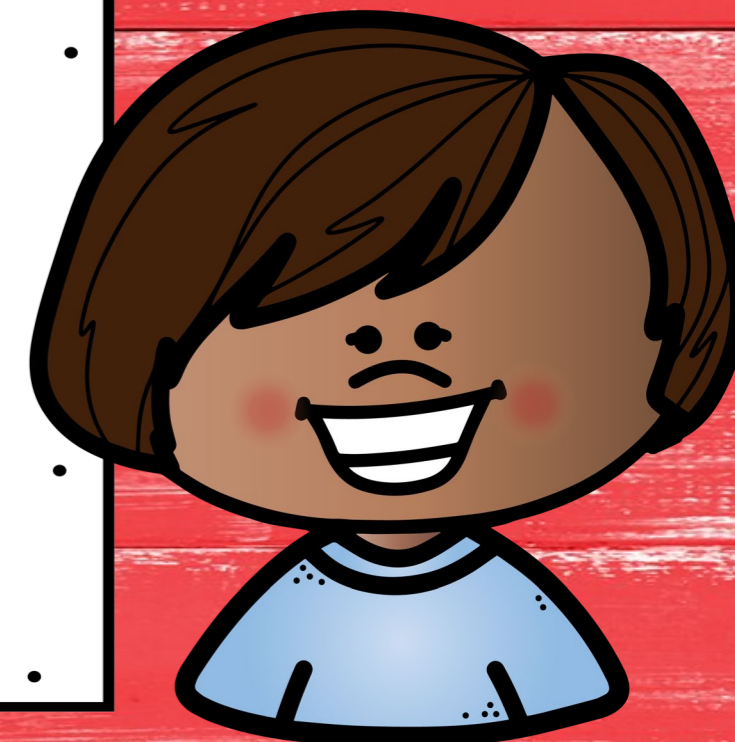
QUESTION	ANSWER
I	YOU
YOU	I
HE	HE
SHE	SHE
IT	IT
WE	YOU
YOU	WE
THEY	THEY



ARE **YOU** IN THE
GROCERY STORE?

NO, I'M NOT.

TO BE:
YES / NO
QUESTIONS



DERECHOS DE USO:

Queda prohibido vender o hacer uso comercial de cualquier parte del material y videos encontrados en el canal de YouTube y sitio web de: Inglés Paso a Paso con Lucie / Cursos de Inglés ATS.

No se puede alterar ninguna parte de este material para venderlo o usarlo como parte de un curso en linea o presencial, editarlo, cargarlo a redes sociales, o hacer cualquier otro uso que no esté autorizado por escrito.

TO BE:
YES / NO
QUESTIONS

GRAPHIC CREDITS



Bubbly Borders and more!

